

## MONTHLY SURVEY ON EXPECTATIONS August 2020

Sent on: 4 August 2020

Deadline for responses: 10 August 2020

Variable	Median	Decile 1	Decile 9	Answers	Graph
<b>01.Inflation (% change)</b>					
Current month (monthly change)	0,10	0,00	0,20	56	<a href="#">Graph1</a>
Next month (monthly change)	0,20	0,00	0,30	56	<a href="#">Graph2</a>
In eleven months (12-month change)	2,50	1,80	2,80	55	<a href="#">Graph3</a>
In twenty three months (12-month change)	3,00	2,50	3,20	55	<a href="#">Graph4</a>
In thirty five months (12-month change)	3,00	2,90	3,00	55	<a href="#">Graph5</a>
December 2020 (12-month change)	2,10	1,80	2,50	56	<a href="#">Graph6</a>
December 2021 (12-month change)	2,80	2,50	3,00	55	<a href="#">Graph7</a>
<b>02.Monetary Policy rate target (%) (*)</b>					
Following meeting	0,50	0,50	0,50	56	<a href="#">Graph8</a>
Second following meeting	0,50	0,50	0,50	56	<a href="#">Graph9</a>
In five months	0,50	0,50	0,50	56	<a href="#">Graph10</a>
December 2020	0,50	0,50	0,50	56	<a href="#">Graph11</a>
In eleven months	0,50	0,50	0,75	56	<a href="#">Graph12</a>
In seventeen months	0,50	0,50	1,50	55	<a href="#">Graph13</a>
In twenty three months	1,00	0,50	1,75	55	<a href="#">Graph14</a>
In thirty five months	2,00	1,00	3,00	54	<a href="#">Graph15</a>
<b>03.5-Year BCU (%) (*)</b>					
In two months	-0,90	-1,10	-0,60	47	<a href="#">Graph16</a>
In eleven months	-0,50	-0,80	0,00	46	<a href="#">Graph17</a>
In twenty three months forward	0,00	-0,60	1,00	46	<a href="#">Graph18</a>
<b>04.5-Year BCP (%) (*)</b>					
In two months	1,50	1,20	2,00	47	<a href="#">Graph19</a>
In eleven months	2,00	1,50	2,60	46	<a href="#">Graph20</a>
In twenty three months forward	2,70	1,80	3,40	46	<a href="#">Graph21</a>
<b>05.Exchange Rate (CH \$ per US\$ 1) (*)</b>					
In two months	782,50	760,00	810,00	56	<a href="#">Graph22</a>
In eleven months	770,00	740,00	800,00	55	<a href="#">Graph23</a>
In twenty three months forward	754,00	700,00	800,00	54	<a href="#">Graph24</a>
<b>06.IMACEC (Monthly Activity Index)</b>					
One month ago	-12,00	-14,40	-9,40	56	<a href="#">Graph25</a>
<b>07.IMACEC No Mining (monthly activity index)</b>					
One month ago	-13,00	-15,20	-10,50	45	<a href="#">Graph26</a>
<b>08.GDP (12-month change)</b>					
Within calendar quarter of the survey	-9,00	-12,00	-4,70	53	<a href="#">Graph27</a>
Year 2020	-6,00	-7,00	-4,50	56	<a href="#">Graph28</a>
Year 2021	4,50	2,50	5,50	55	<a href="#">Graph29</a>
Year 2022	3,20	2,50	4,00	53	<a href="#">Graph30</a>
<b>09.GDP No Mining (12-month change)</b>					
Within calendar quarter of the survey	-9,10	-12,00	-4,50	44	<a href="#">Graph31</a>
Year 2020	-6,20	-8,00	-4,80	45	<a href="#">Graph32</a>
Year 2021	4,50	2,50	6,00	45	<a href="#">Graph33</a>
Year 2022	3,20	2,20	4,20	45	<a href="#">Graph34</a>
<b>10.HFC including NPO (12-month change)</b>					
Year 2020	-5,00	-8,00	-3,60	45	<a href="#">Graph35</a>
Year 2021	4,50	3,00	6,60	45	<a href="#">Graph36</a>
<b>11.GFCF (12-month change)</b>					
Year 2020	-12,10	-20,00	-9,00	46	<a href="#">Graph37</a>
Year 2021	6,00	3,00	10,00	46	<a href="#">Graph38</a>
<b>12.Structural Parameters - average years 2023-2027</b>					
Inflation (12-month change)	3,00	2,80	3,00	47	<a href="#">Graph39</a>
Monetary Policy rate target	3,00	2,50	4,00	47	<a href="#">Graph40</a>
Exchange Rate (12-month change)	0,00	-2,00	5,00	43	<a href="#">Graph41</a>
GDP (12-month change)	2,50	2,00	3,50	47	<a href="#">Graph42</a>

(\*) End of the month.

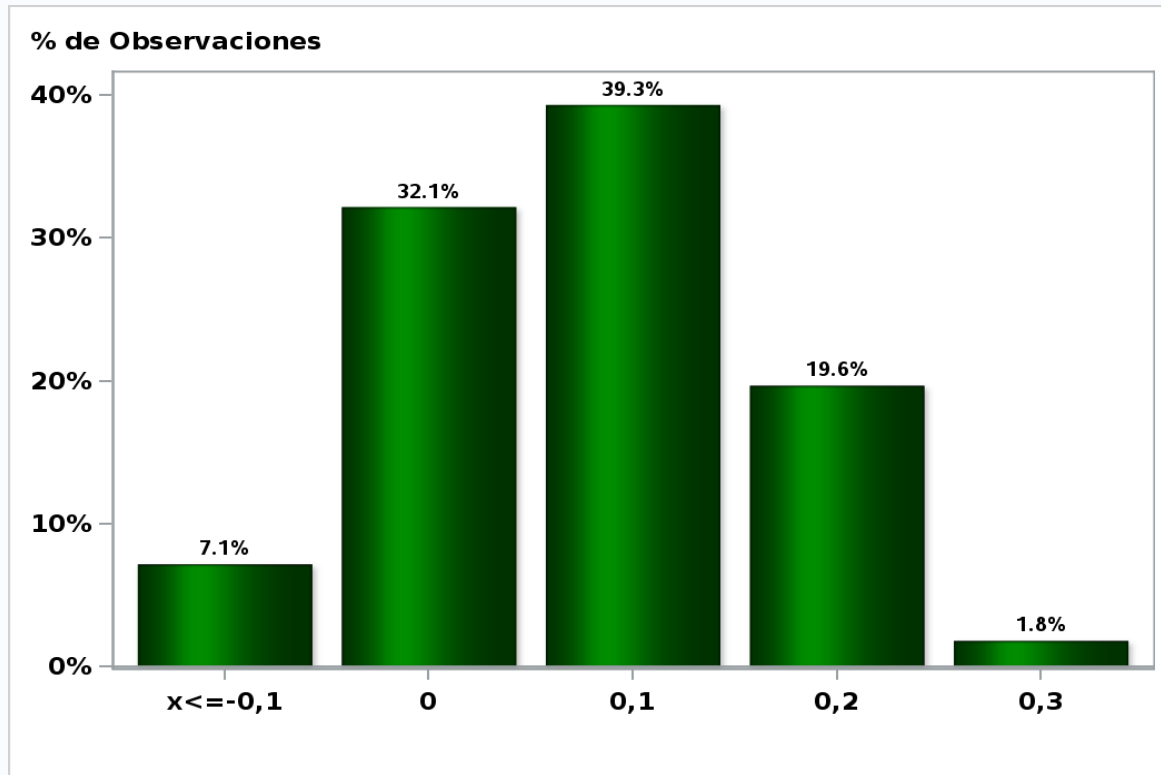
Monthly survey of selected academics, consultants, and executives or advisors of financial institutions and corporations. It is completed the day after the publication of the CPI and it is published the day after its reception, at 8:30 hrs. approximately(www.bcentral.cl, Statistics section, Economic Surveys, Website: <https://www.bcentral.cl/en/areas/economic-surveys>)

The survey period comprises the week prior to publication

## Monthly Survey On Expectations August 2020

Inflation current month (monthly change)

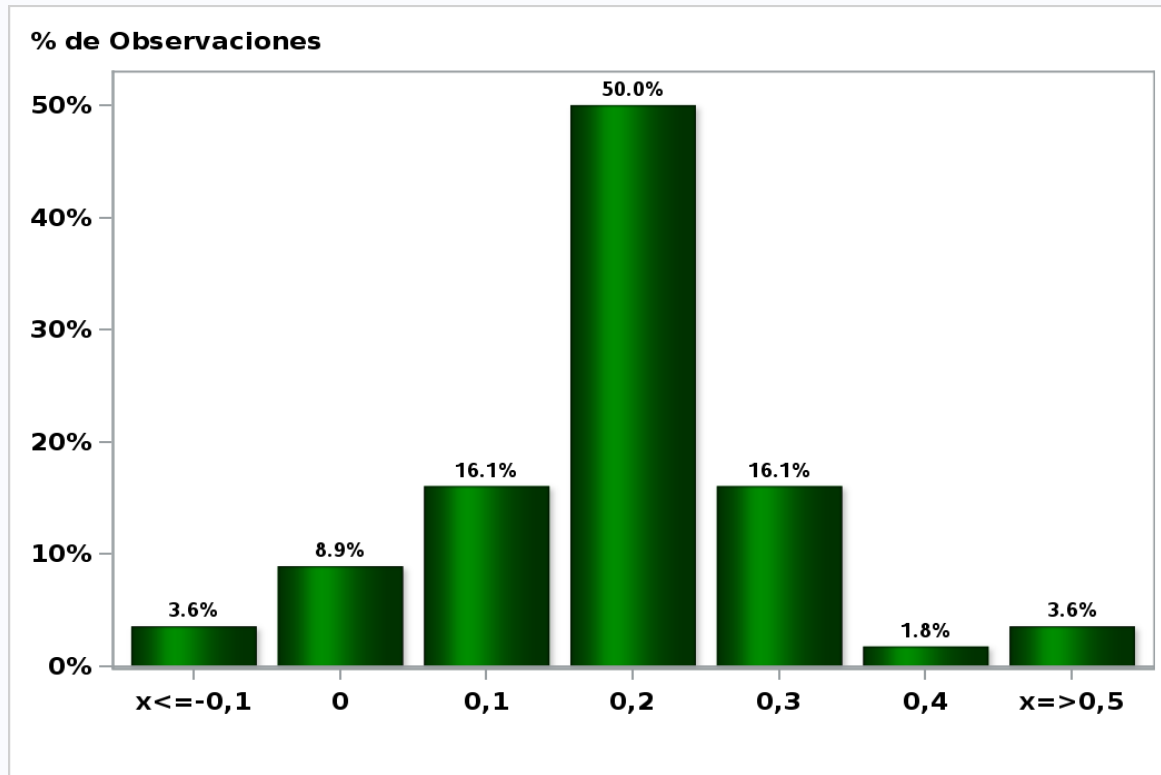
Answers: 56 Median: 0,1%



[Click to view summary table](#)

**Monthly Survey On Expectations August 2020**  
**Inflation next month (monthly change)**

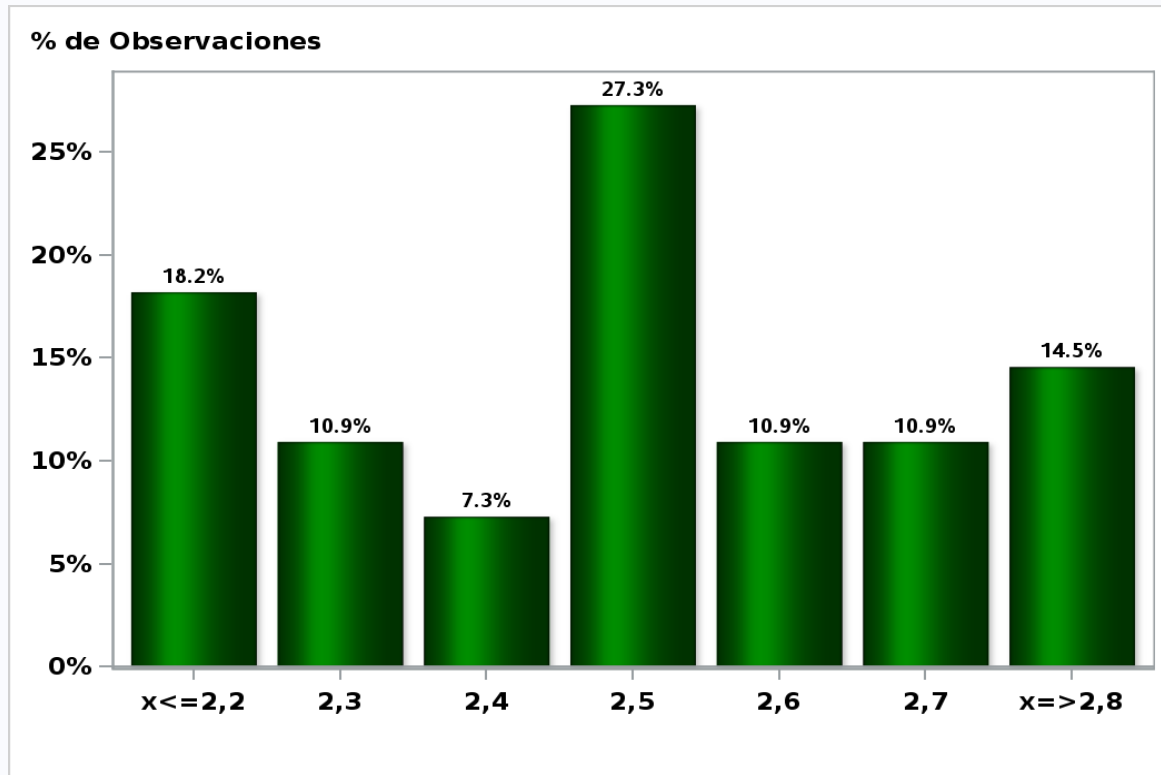
**Answers: 56 Median: 0,2%**



[Click to view summary table](#)

**Monthly Survey On Expectations August 2020**  
**Inflation in eleven months (12-month change)**

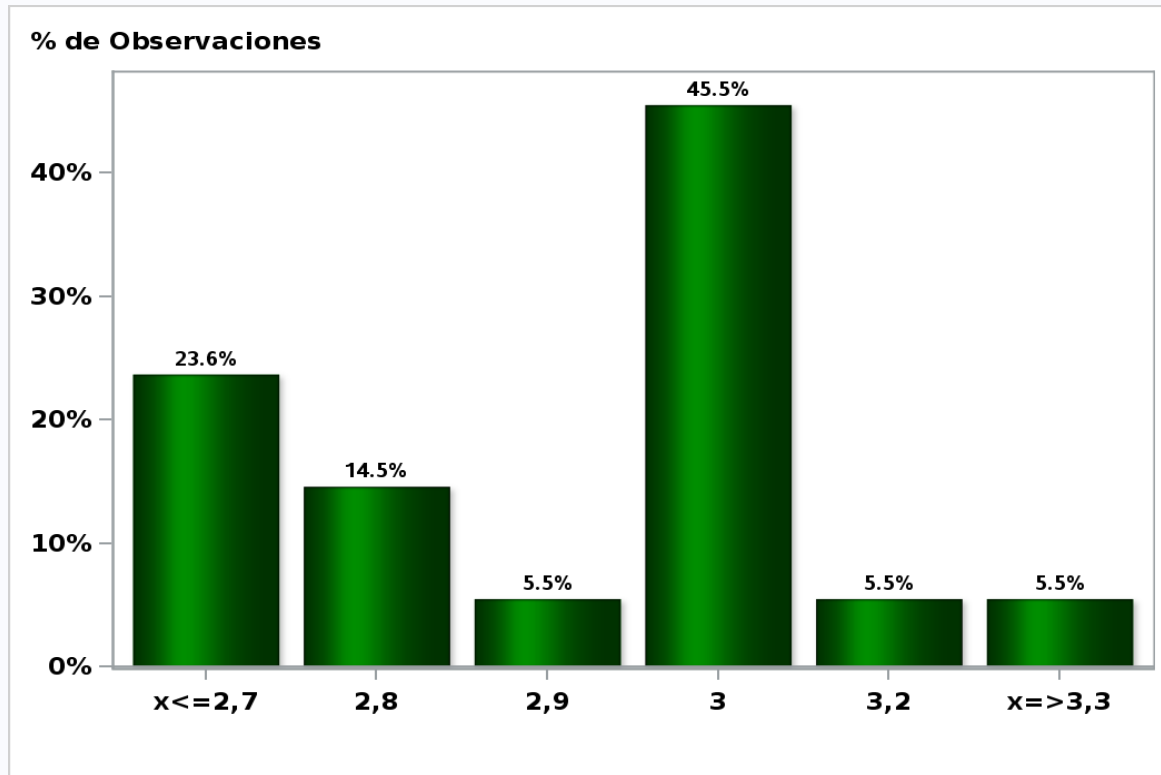
**Answers: 55 Median: 2,5%**



[Click to view summary table](#)

**Monthly Survey On Expectations August 2020**  
**Inflation in twenty three months (12-month change)**

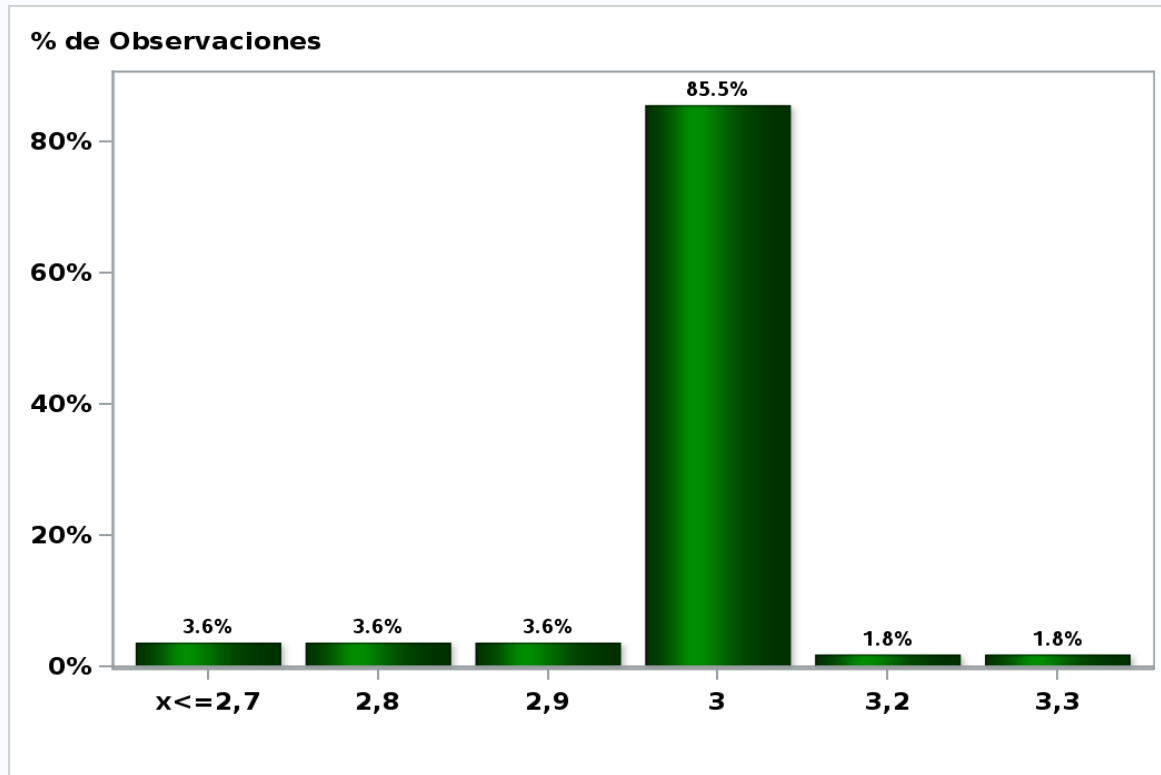
**Answers: 55 Median: 3%**



[Click to view summary table](#)

**Monthly Survey On Expectations August 2020**  
**Inflation in thirty five months (12-month change)**

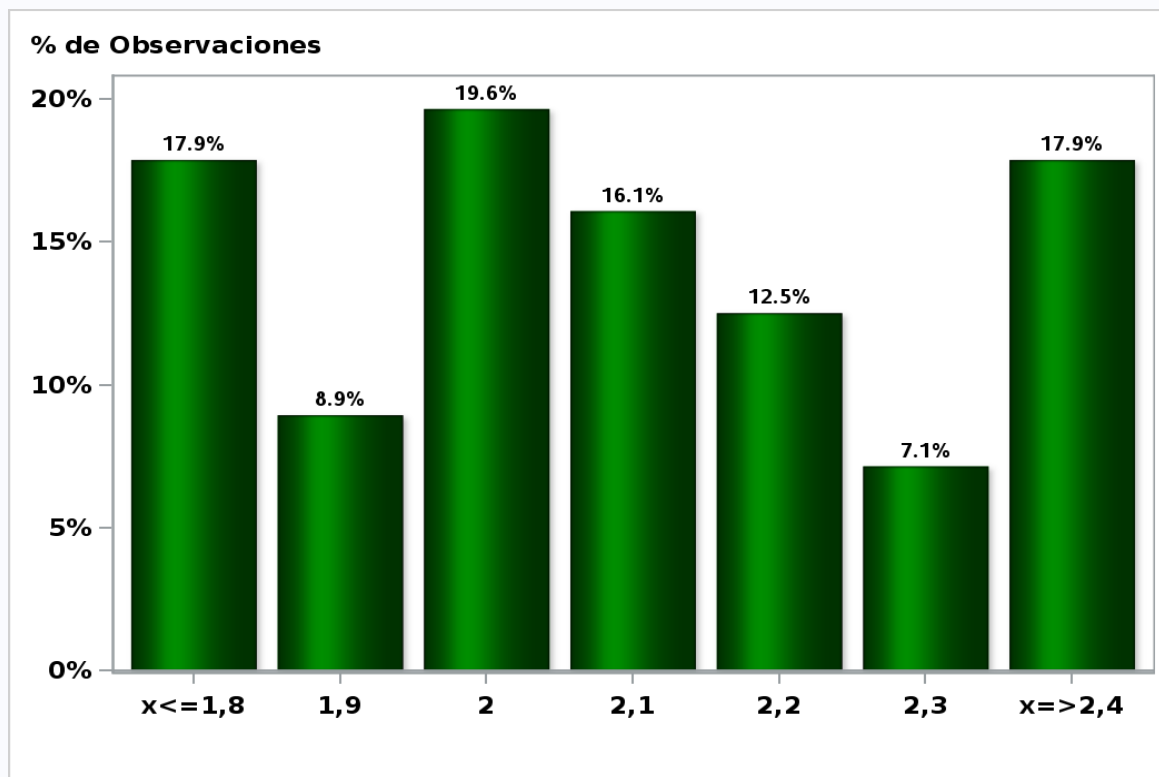
**Answers: 55 Median: 3%**



[Click to view summary table](#)

**Monthly Survey On Expectations August 2020**  
**Inflation december 2020 ( 12-month change )**

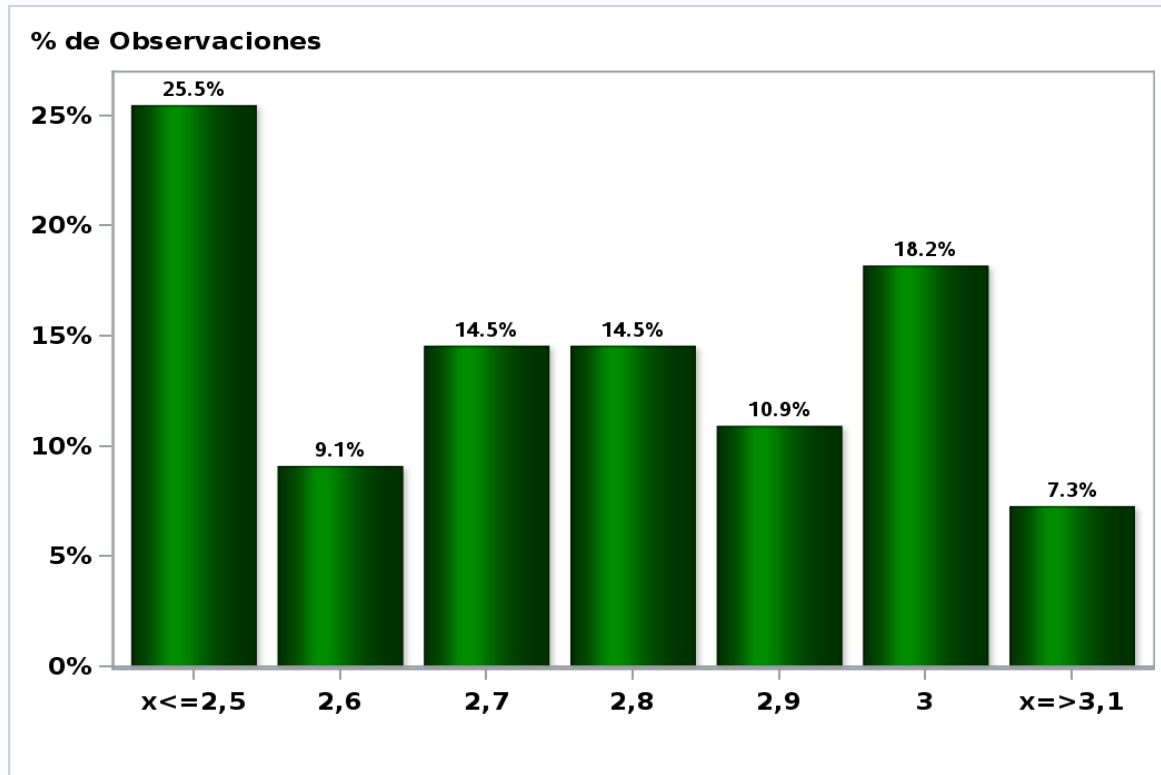
**Answers: 56 Median: 2,1%**



[Click to view summary table](#)

**Monthly Survey On Expectations August 2020**  
**Inflation december 2021 ( 12-month change )**

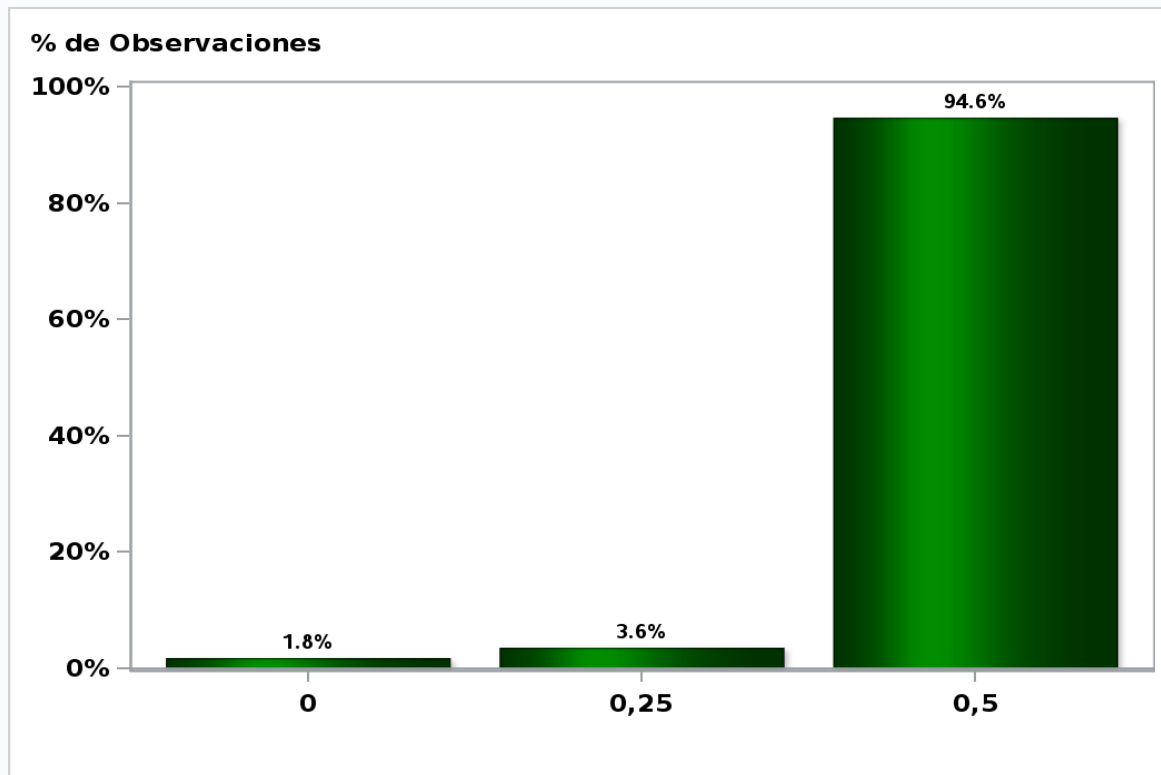
**Answers: 55 Median: 2,8%**



[Click to view summary table](#)



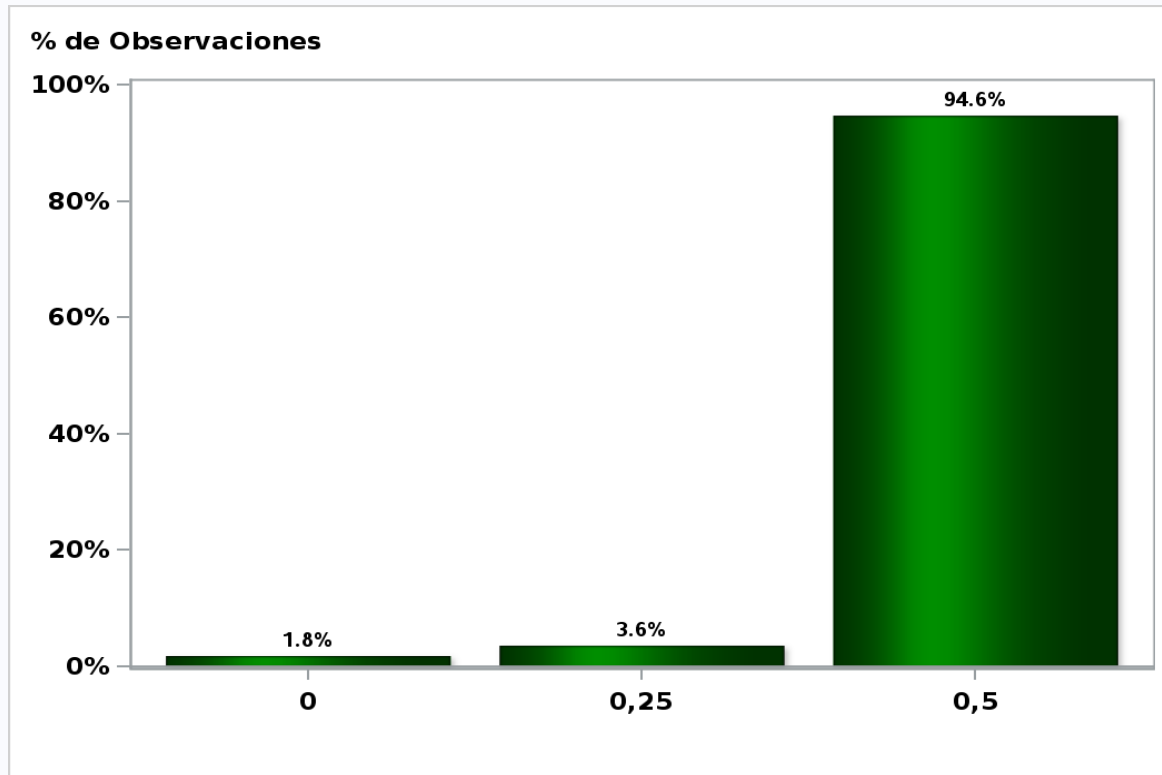
**Monthly Survey On Expectations August 2020**  
**Monetary Policy rate target following meeting**  
**Answers: 56 Median: 0,5%**



[Click to view summary table](#)

**Monthly Survey On Expectations August 2020**  
**Monetary Policy rate target second following meeting**

**Answers: 56 Median: 0,5%**

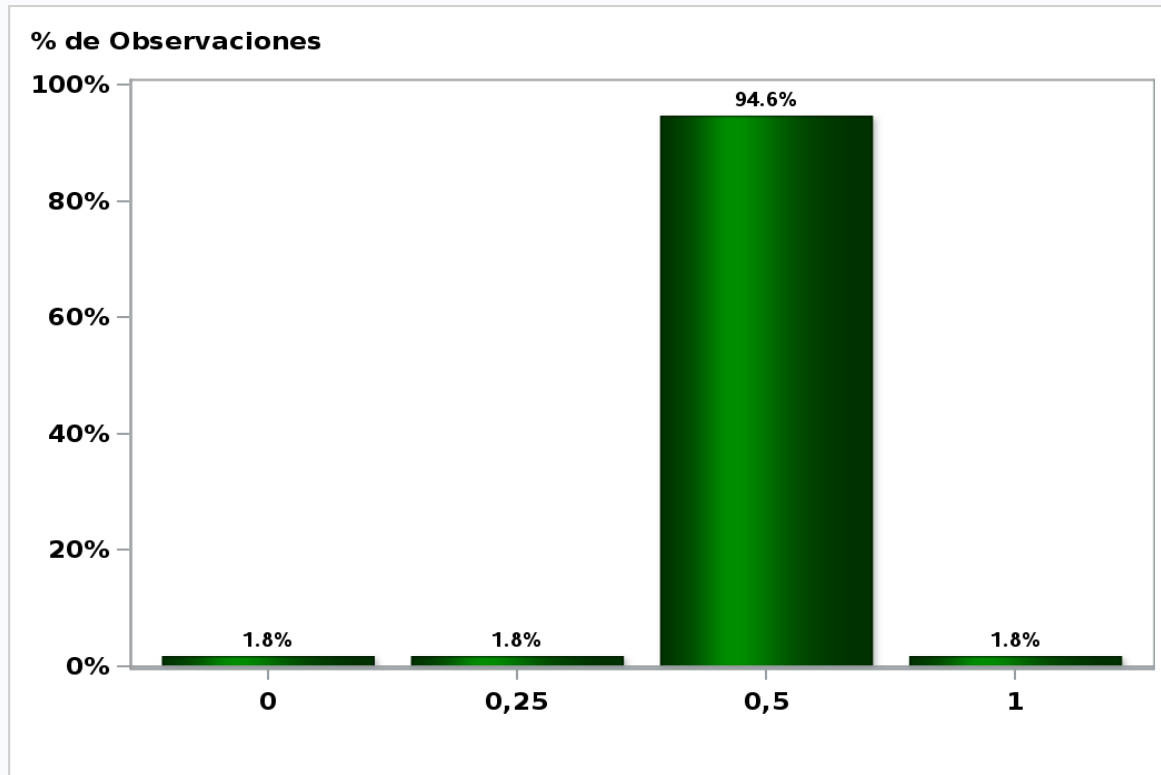


[Click to view summary table](#)

## Monthly Survey On Expectations August 2020

### Monetary Policy rate target In five months

**Answers: 56 Median: 0,5%**

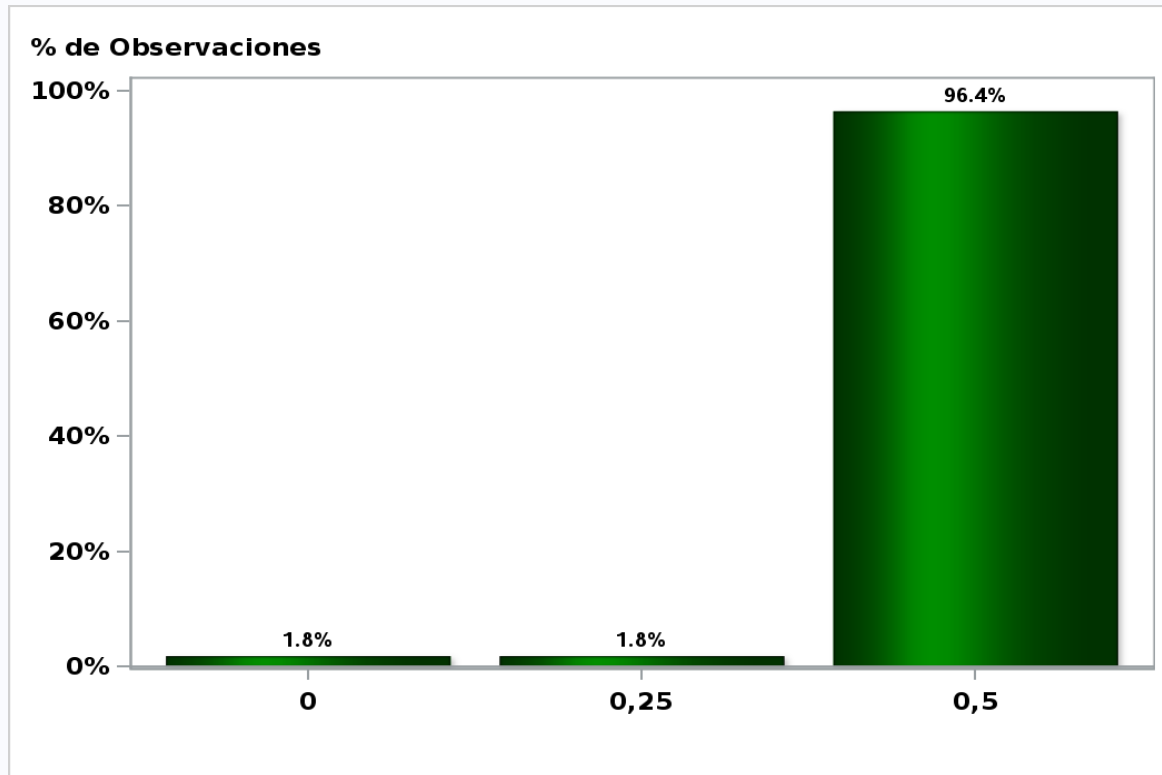


[Click to view summary table](#)

## Monthly Survey On Expectations August 2020

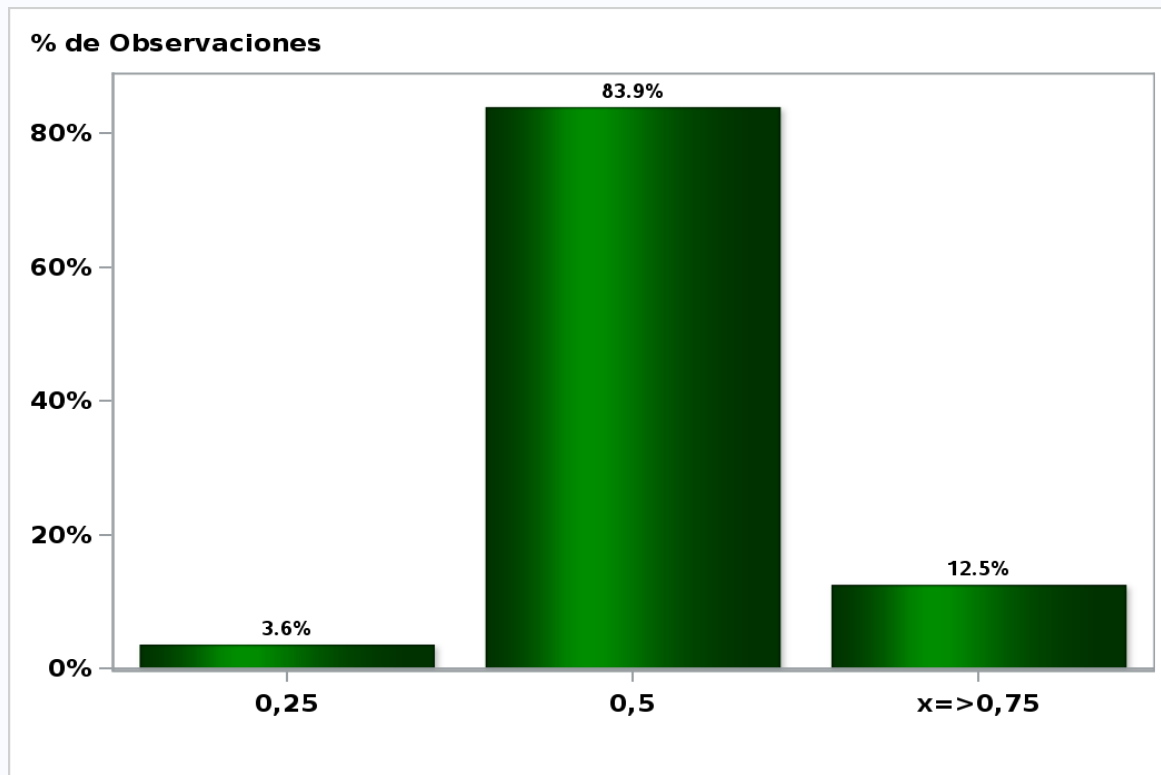
### Monetary Policy rate target december 2020

**Answers: 56 Median: 0,5%**



[Click to view summary table](#)

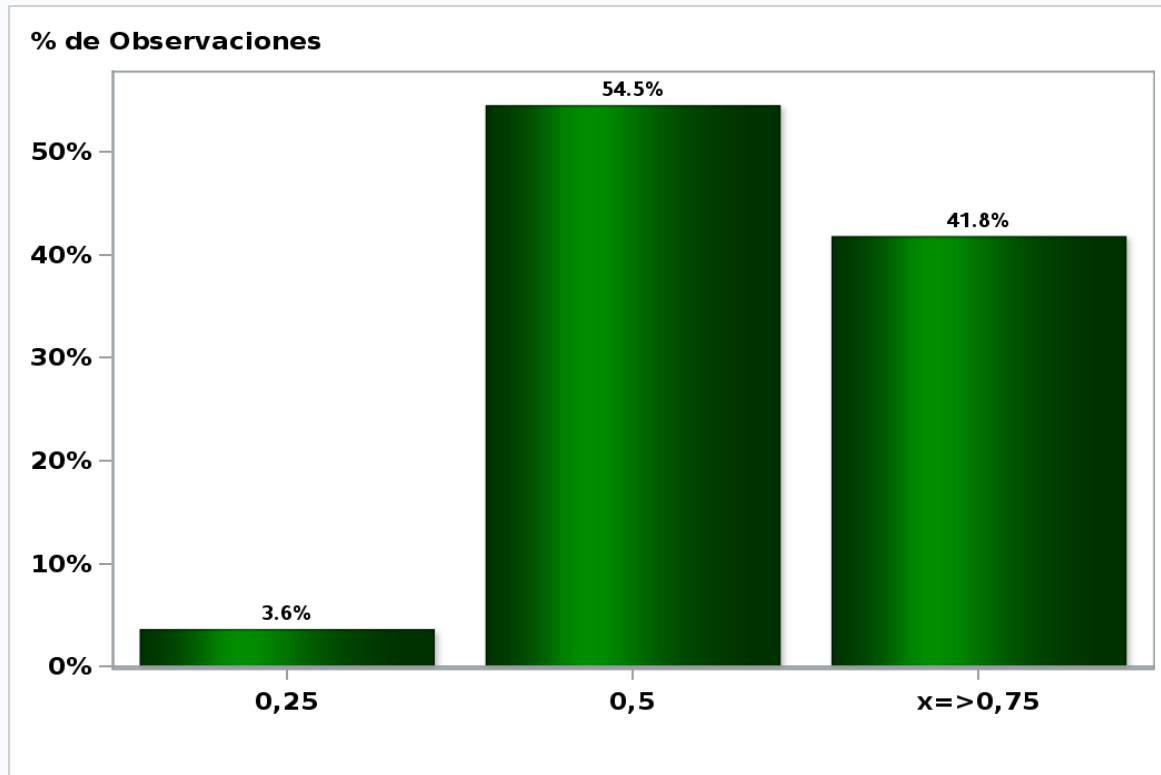
**Monthly Survey On Expectations August 2020**  
**Monetary Policy rate target in eleven months**  
**Answers: 56 Median: 0,5%**



[Click to view summary table](#)

**Monthly Survey On Expectations August 2020**  
**Monetary Policy rate target in seventeen months**

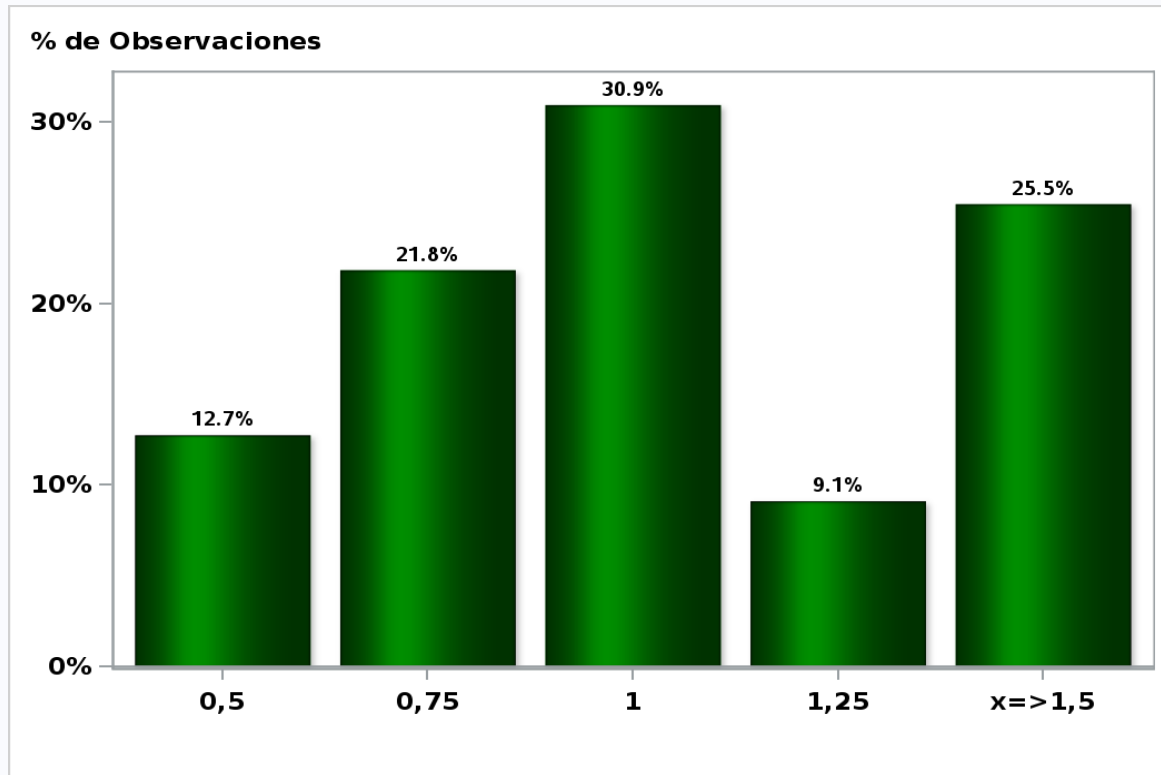
**Answers: 55 Median: 0,5%**



[Click to view summary table](#)

**Monthly Survey On Expectations August 2020**  
**Monetary Policy rate target in twenty three months**

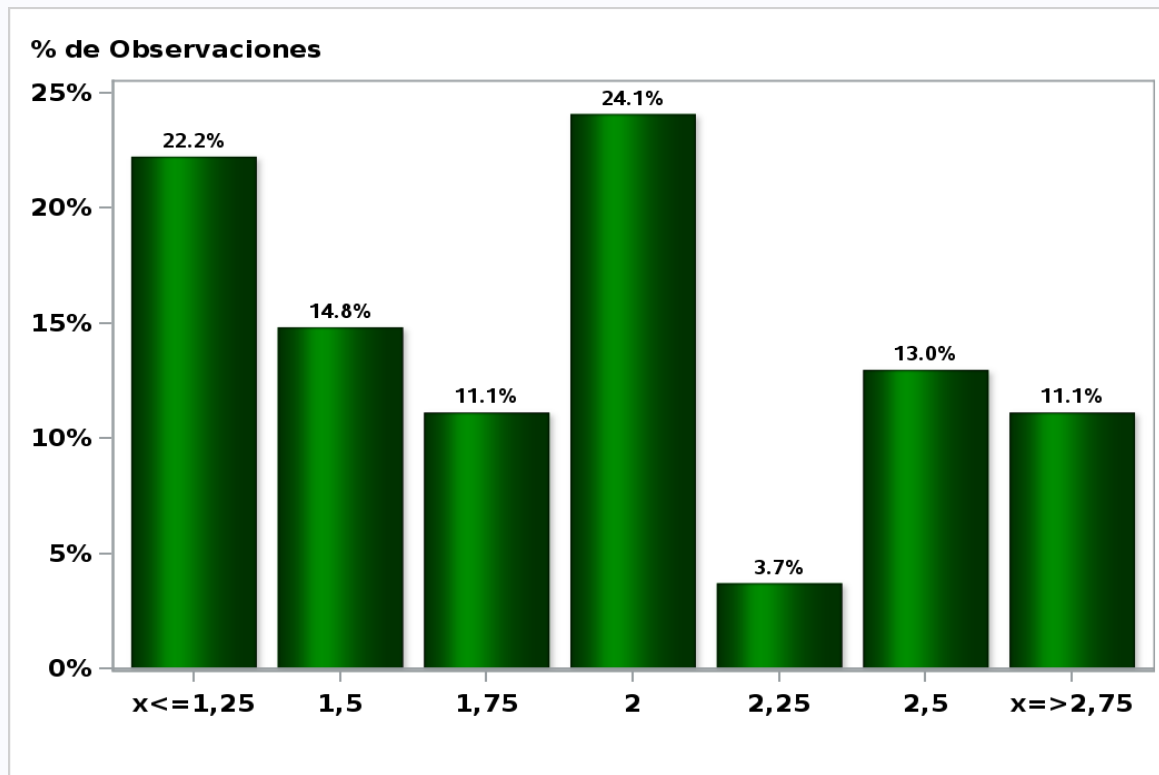
**Answers: 55 Median: 1%**



[Click to view summary table](#)

**Monthly Survey On Expectations August 2020**  
**Monetary Policy rate target in thirty five months**

**Answers: 54 Median: 2%**



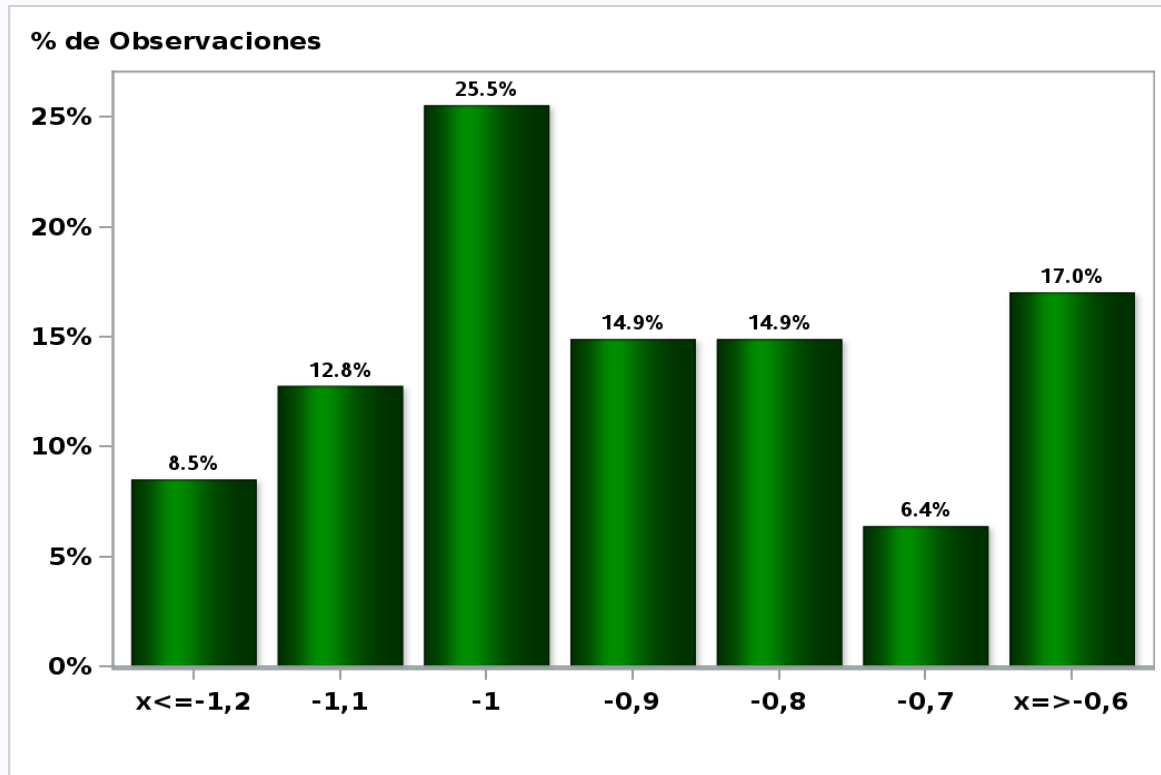
[Click to view summary table](#)



## Monthly Survey On Expectations August 2020

5-Year BCU In two months

Answers: 47 Median: -0,9%

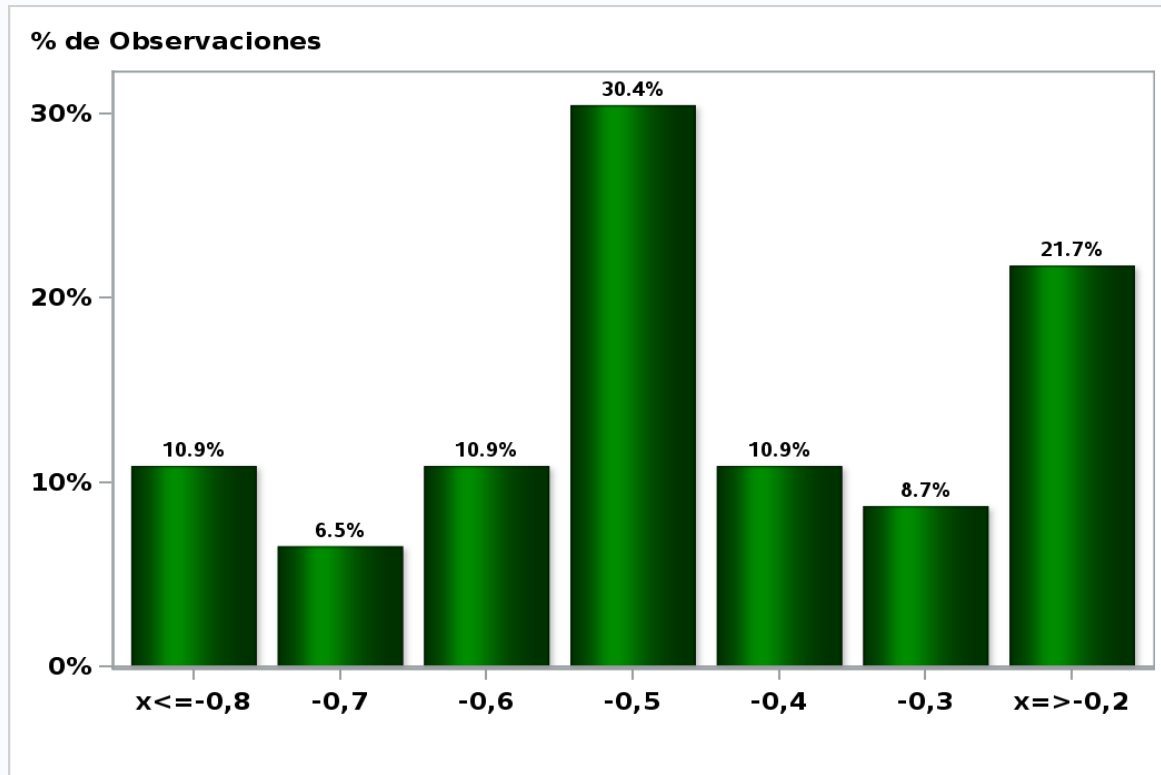


[Click to view summary table](#)

## Monthly Survey On Expectations August 2020

5-Year BCU in eleven months

Answers: 46 Median: -0,5%

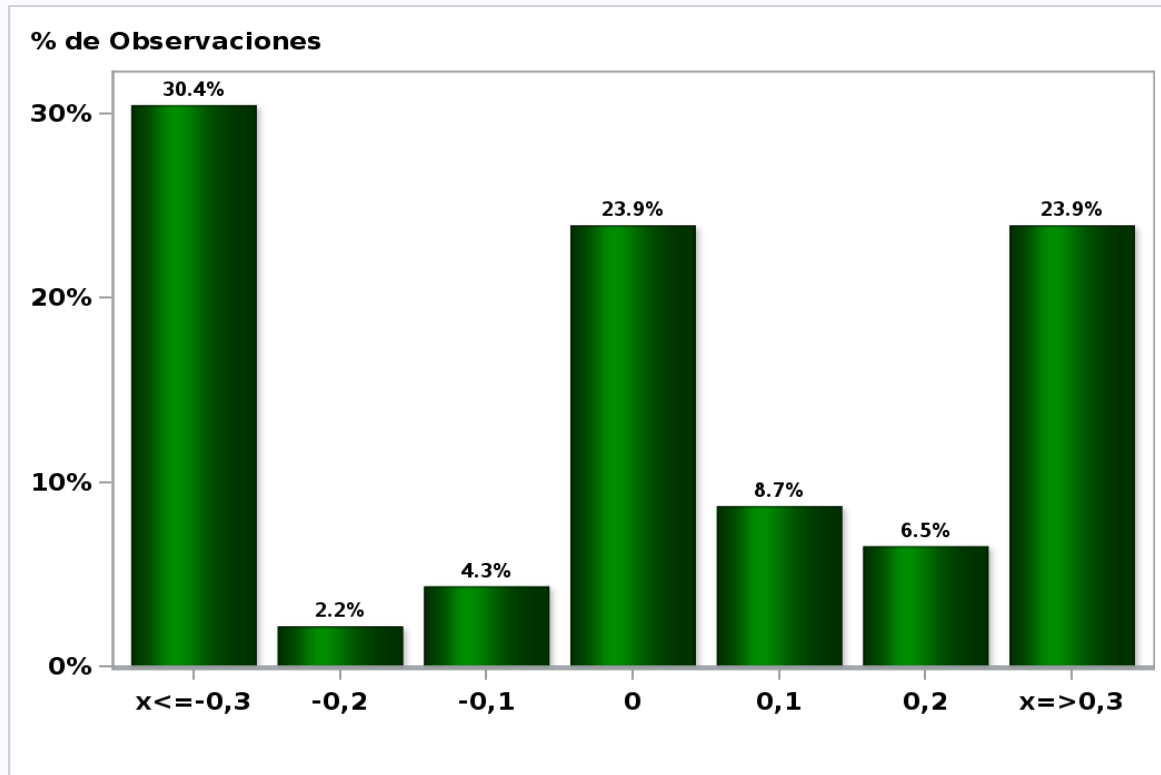


[Click to view summary table](#)

## Monthly Survey On Expectations August 2020

5-Year BCU in twenty three months forward

Answers: 46 Median: 0%

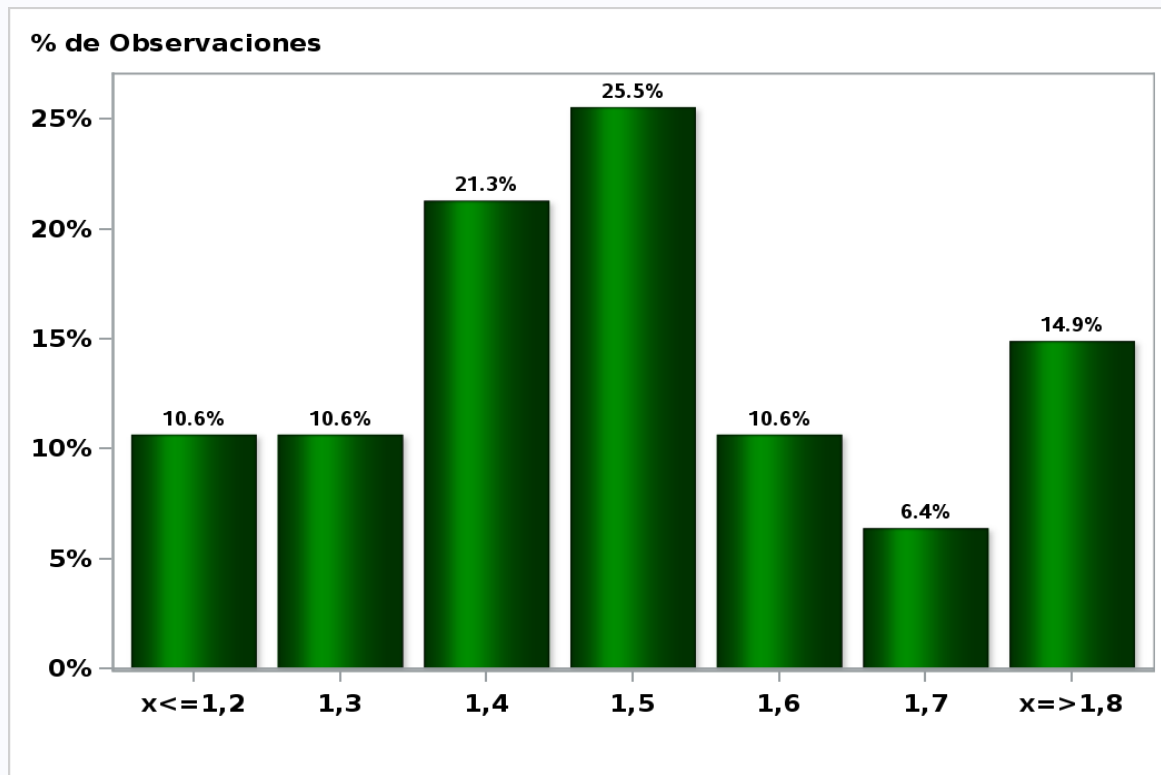


[Click to view summary table](#)

## Monthly Survey On Expectations August 2020

5-Year BCP in two months

Answers: 47 Median: 1,5%

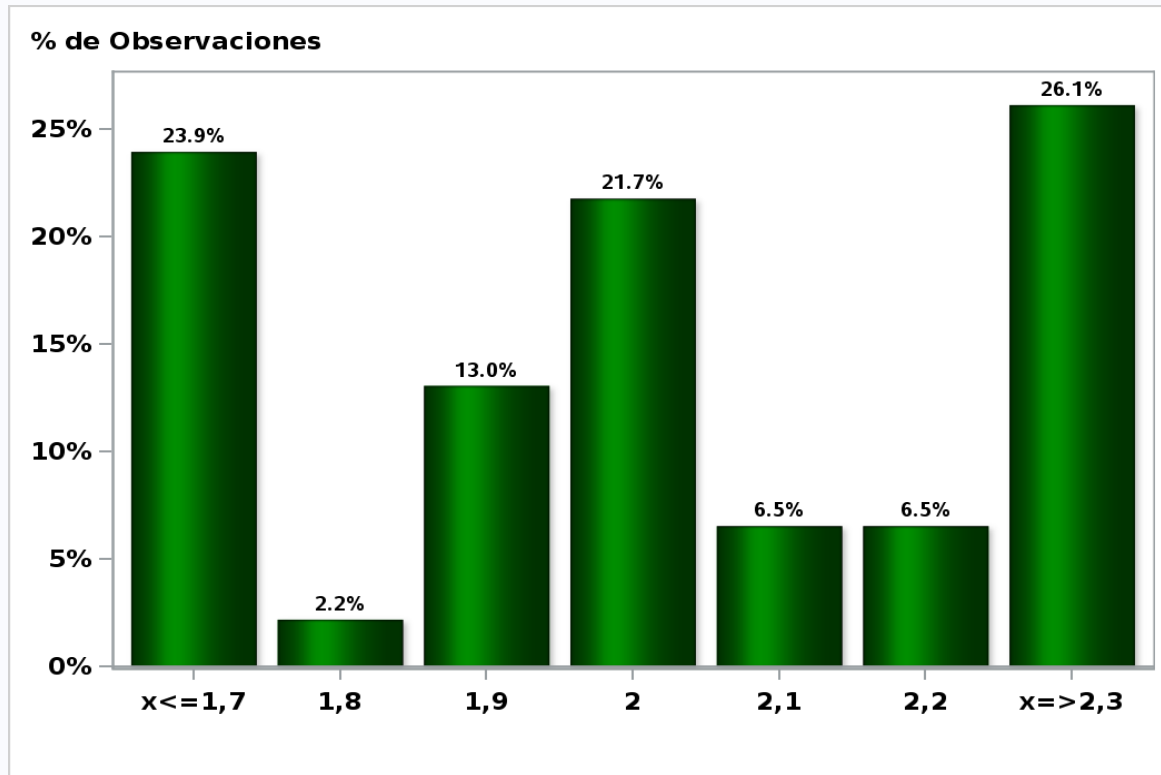


[Click to view summary table](#)

## Monthly Survey On Expectations August 2020

### 5-Year BCP in eleven months

Answers: 46 Median: 2%

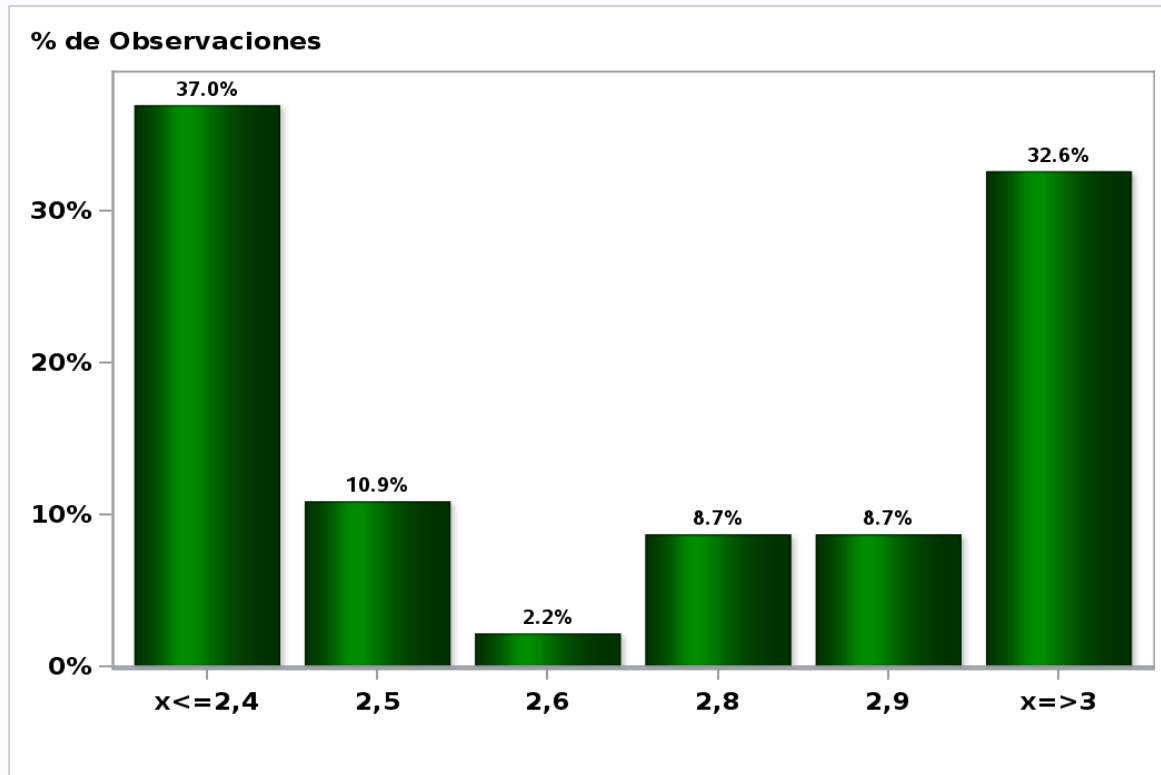


[Click to view summary table](#)

## Monthly Survey On Expectations August 2020

5-Year BCP in twenty three months forward

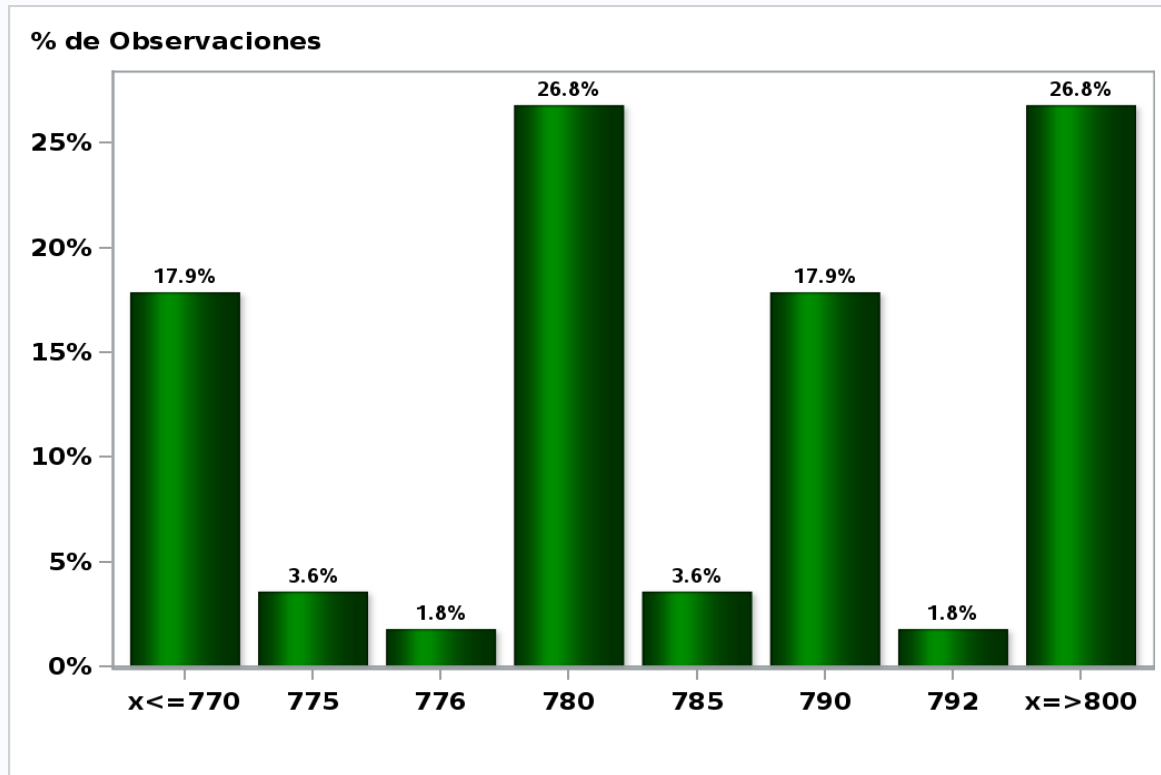
**Answers: 46 Median: 2,7%**



[Click to view summary table](#)

Monthly Survey On Expectations August 2020  
Exchange Rate in two months (CH \$ per US\$)

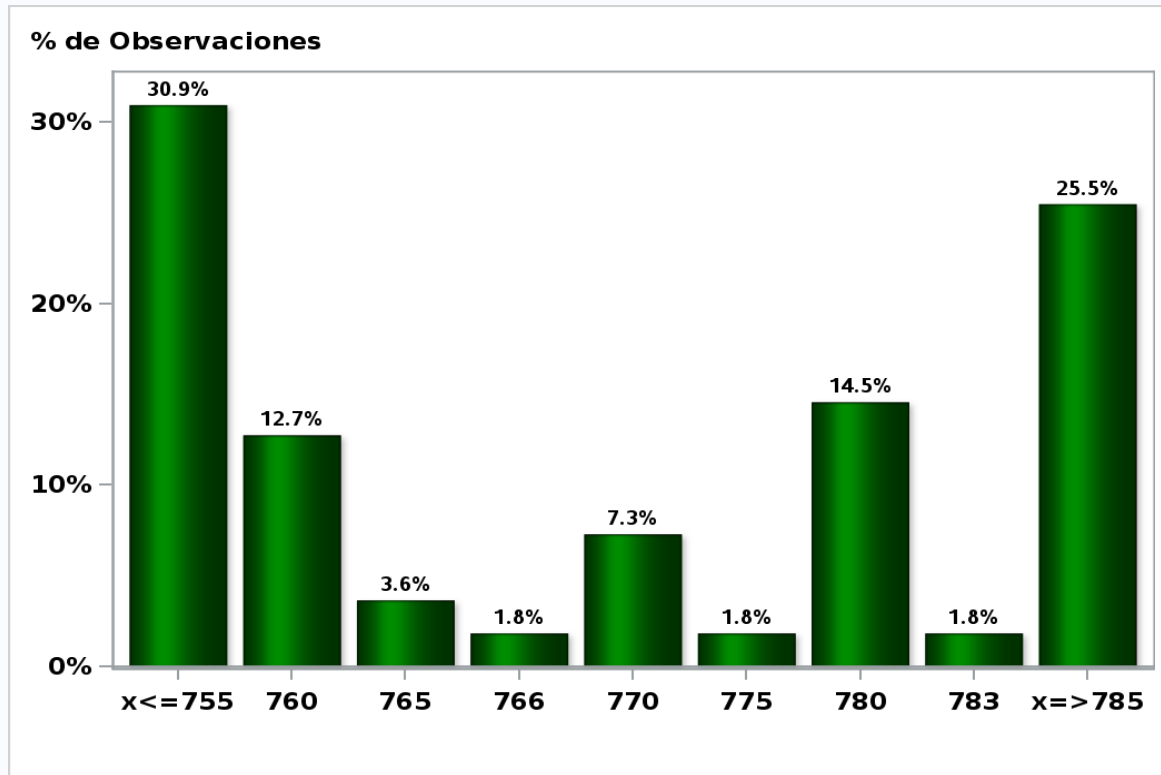
Answers: 56 Median: \$782,5



[Click to view summary table](#)

**Monthly Survey On Expectations August 2020**  
**Exchange Rate in eleven months (CH \$ per US\$)**

**Answers: 55 Median: \$770**

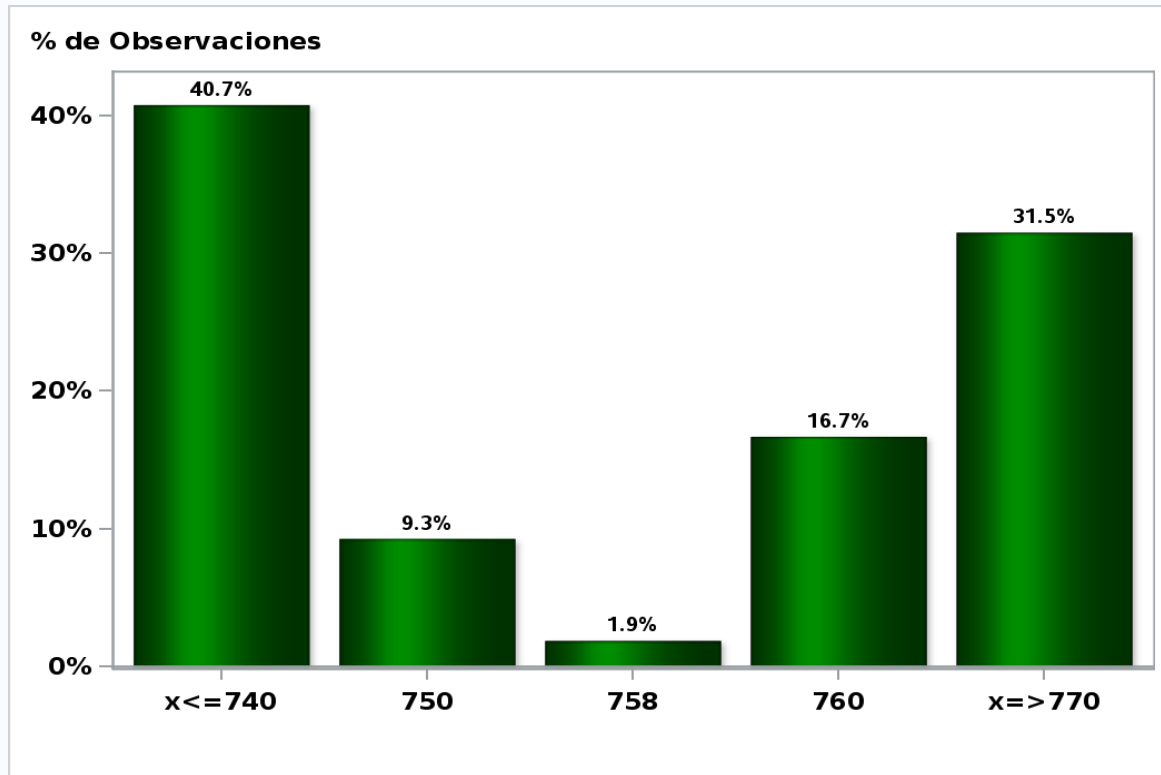


[Click to view summary table](#)



**Monthly Survey On Expectations August 2020**  
**Exchange Rate in twenty three months forward (CH \$ per US\$)**

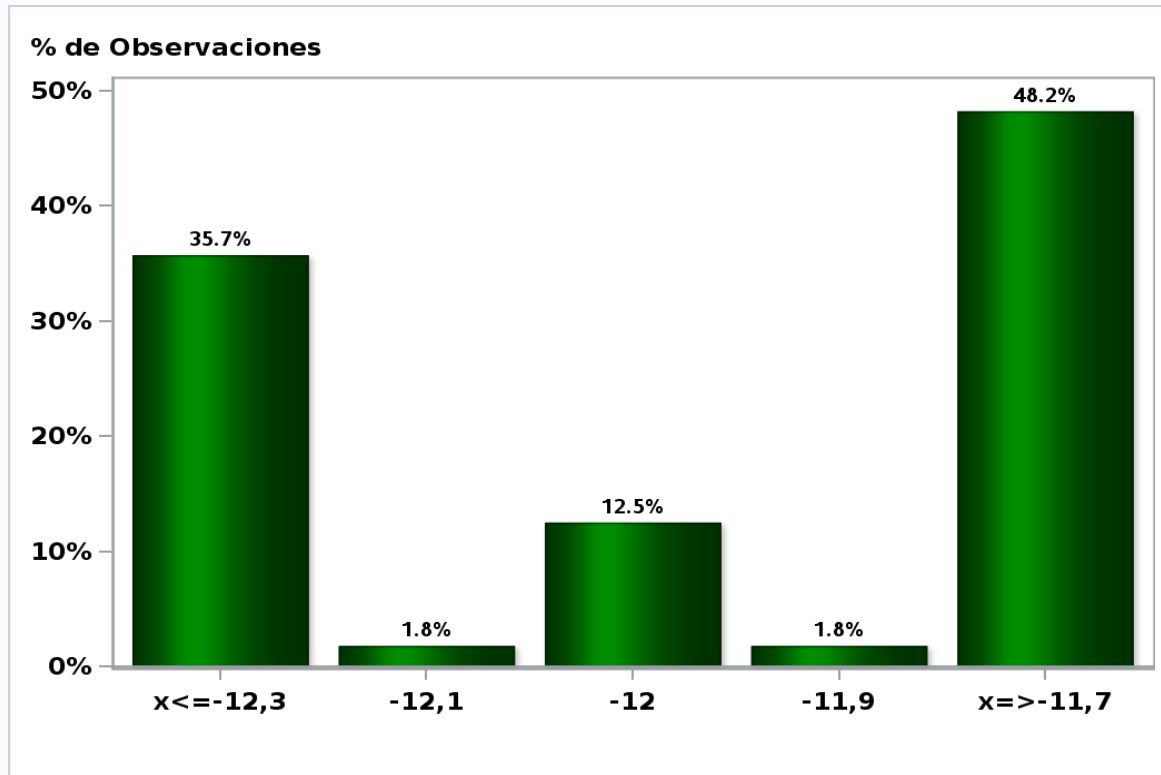
**Answers: 54 Median: \$754**



[Click to view summary table](#)

**Monthly Survey On Expectations August 2020**  
**IMACEC (Monthly Activity Index) one month ago**

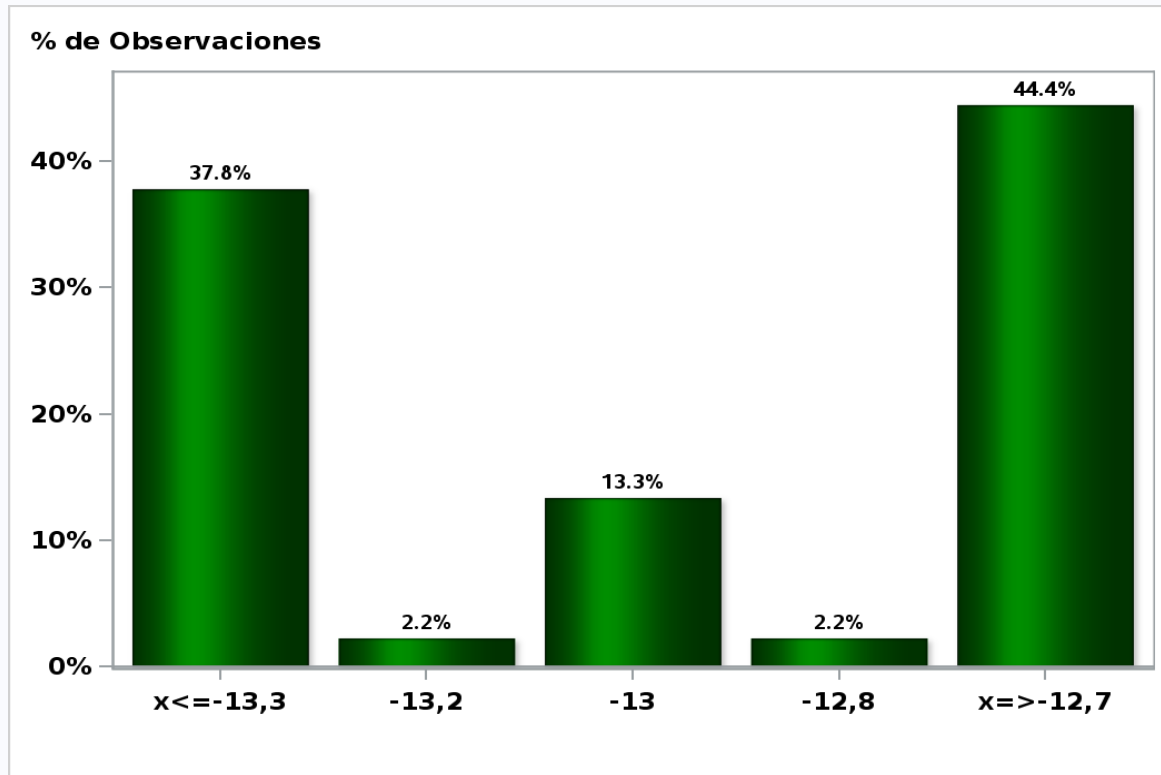
**Answers: 56 Median: -12%**



[Click to view summary table](#)

Monthly Survey On Expectations August 2020  
IMACEC No Mining (Monthly Activity Index) one month ago

Answers: 45 Median: -13%

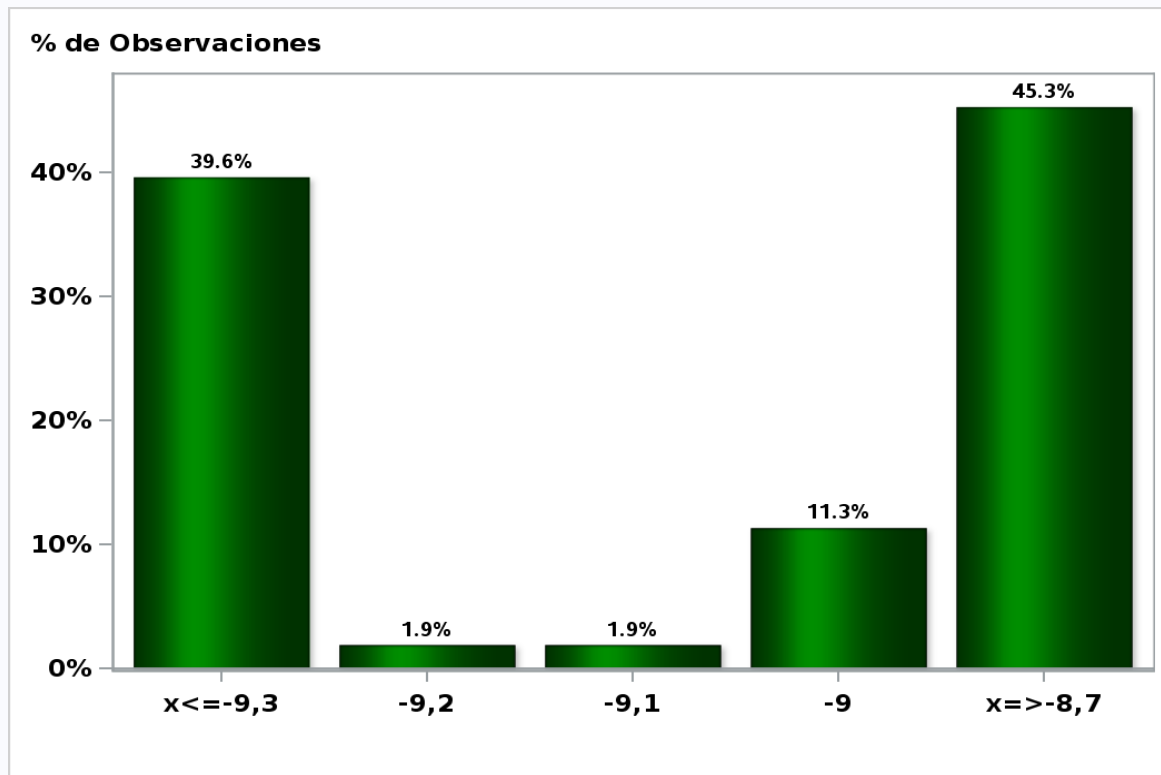


[Click to view summary table](#)

## Monthly Survey On Expectations August 2020

GDP within calendar quarter of the survey

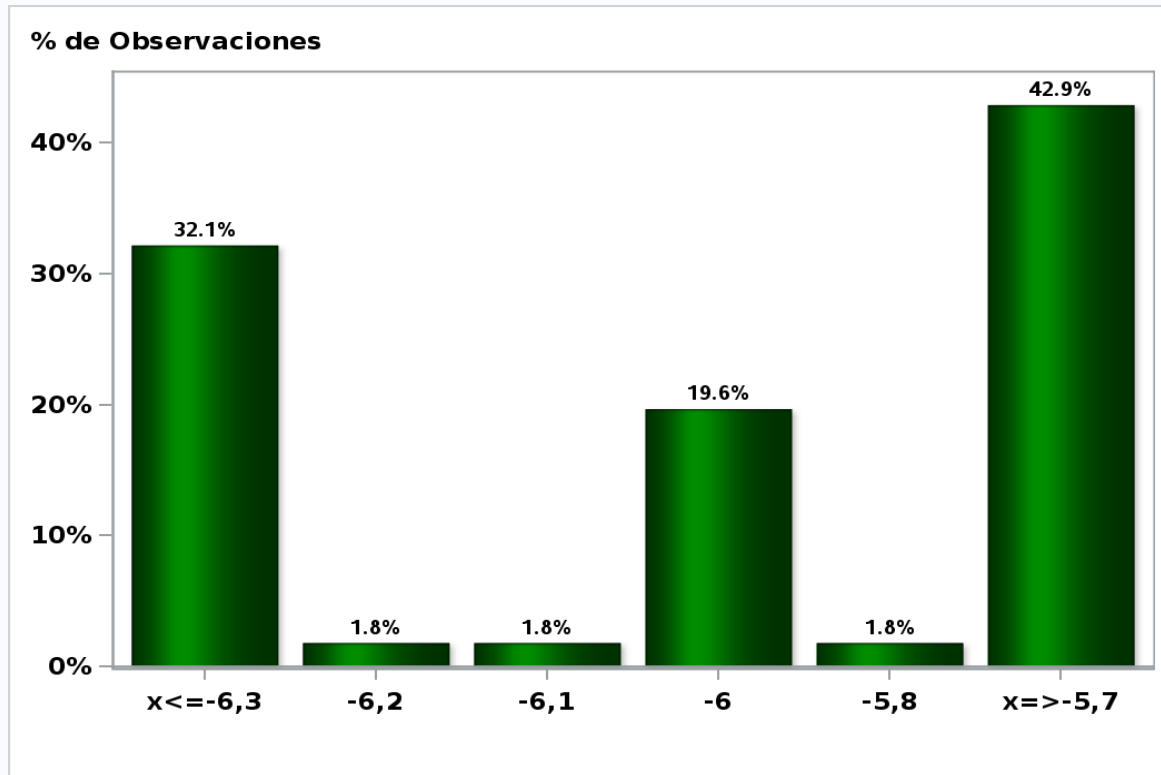
Answers: 53 Median: -9%



[Click to view summary table](#)

Monthly Survey On Expectations August 2020  
GDP year 2020 (12-month change)

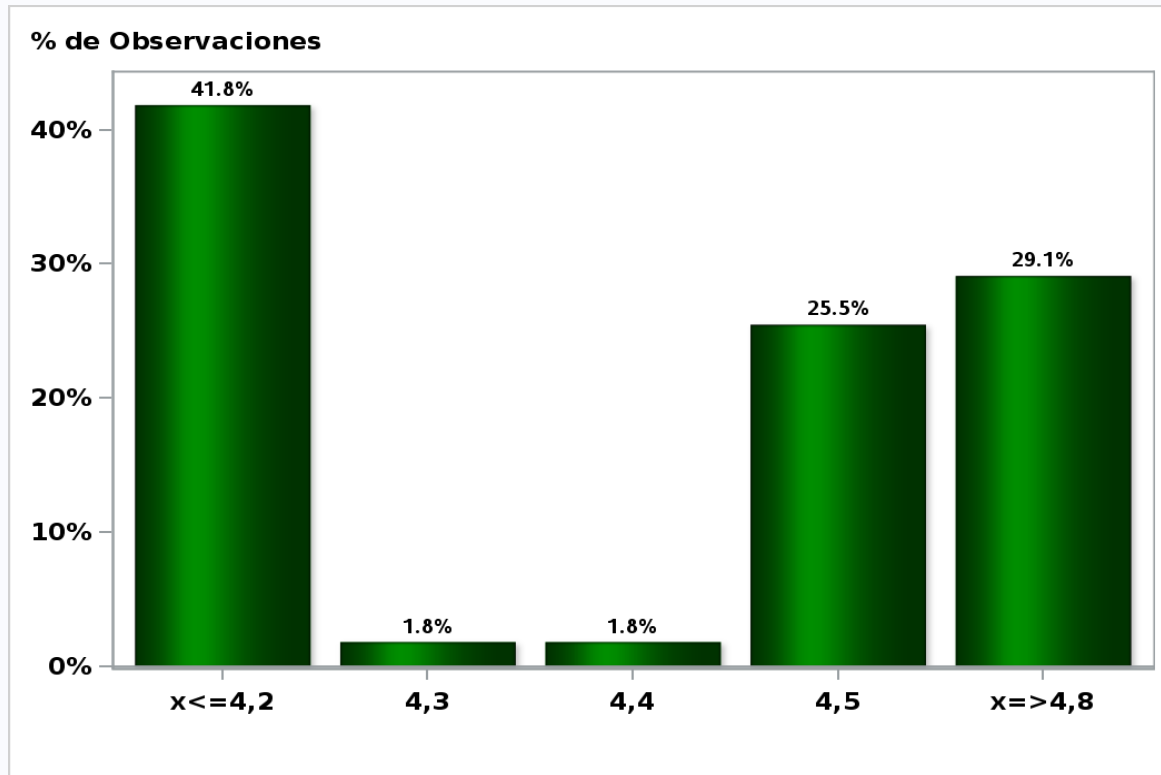
Answers: 56 Median: -6%



[Click to view summary table](#)

**Monthly Survey On Expectations August 2020**  
**GDP year 2021 (12-month change)**

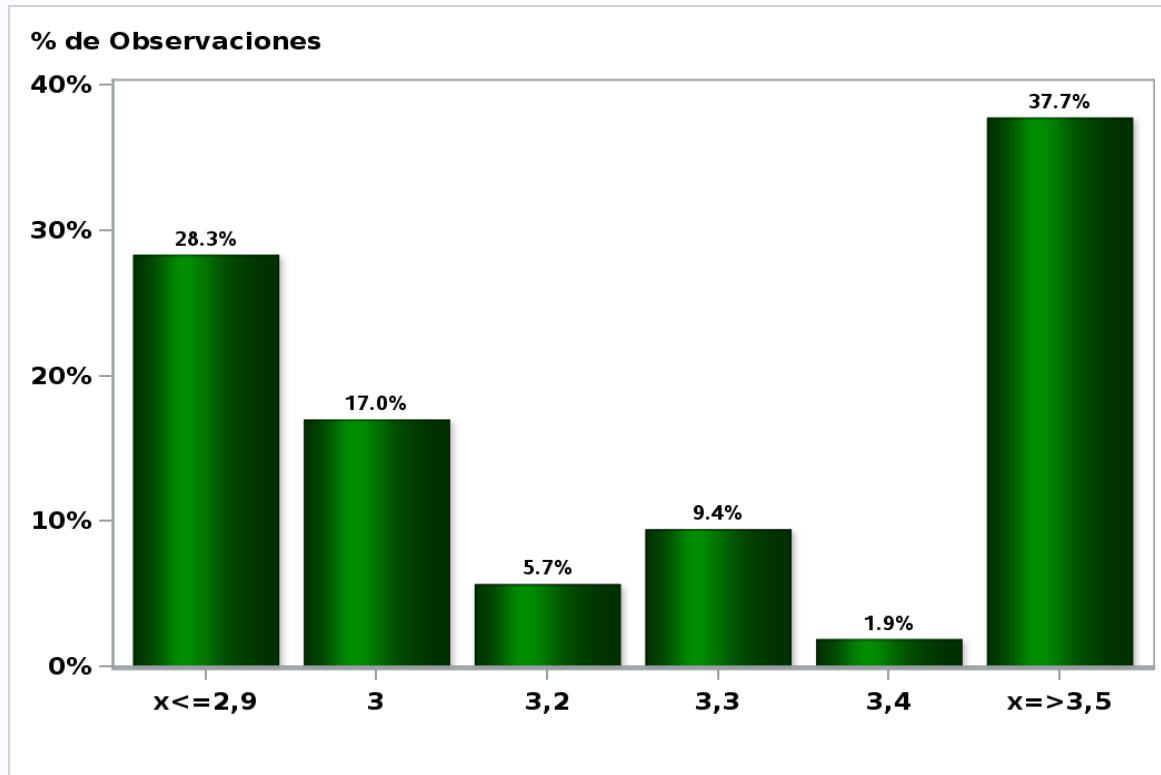
**Answers: 55 Median: 4,5%**



[Click to view summary table](#)

**Monthly Survey On Expectations August 2020**  
**GDP year 2022 (12-month change)**

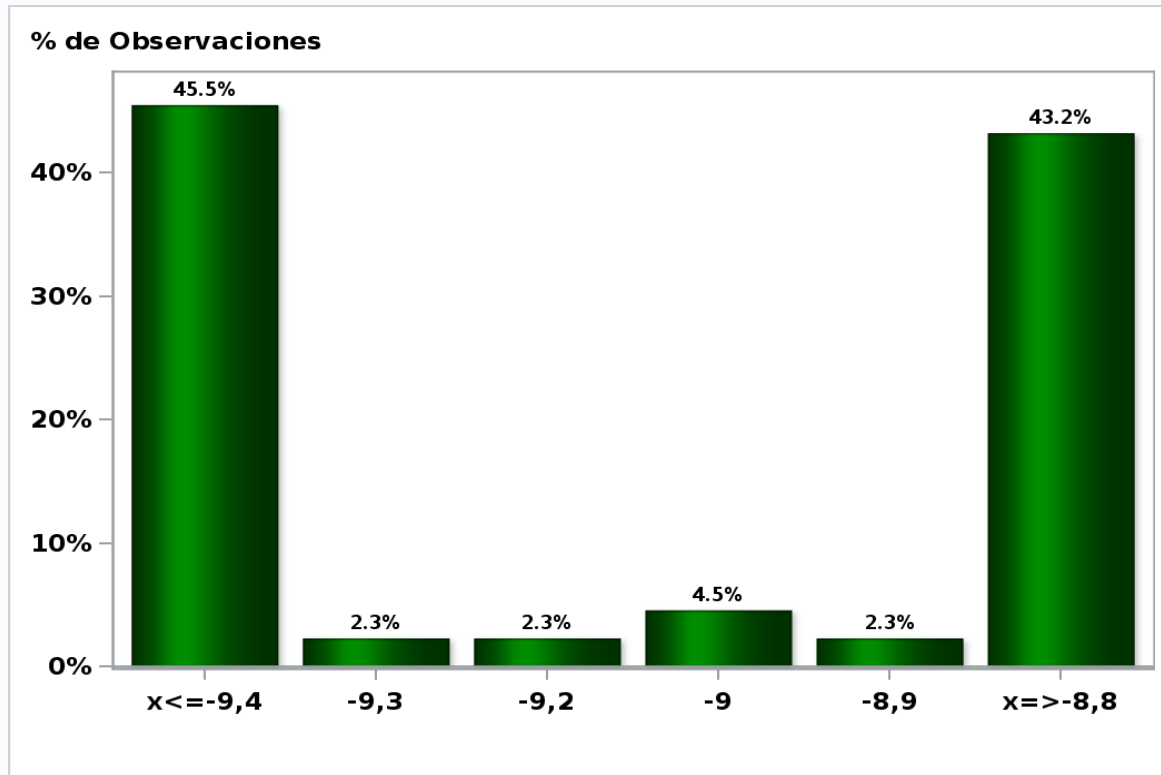
**Answers: 53 Median: 3,2%**



[Click to view summary table](#)

**Monthly Survey On Expectations August 2020**  
**GDP No Mining within calendar quarter of the survey**

**Answers: 44 Median: -9,1%**

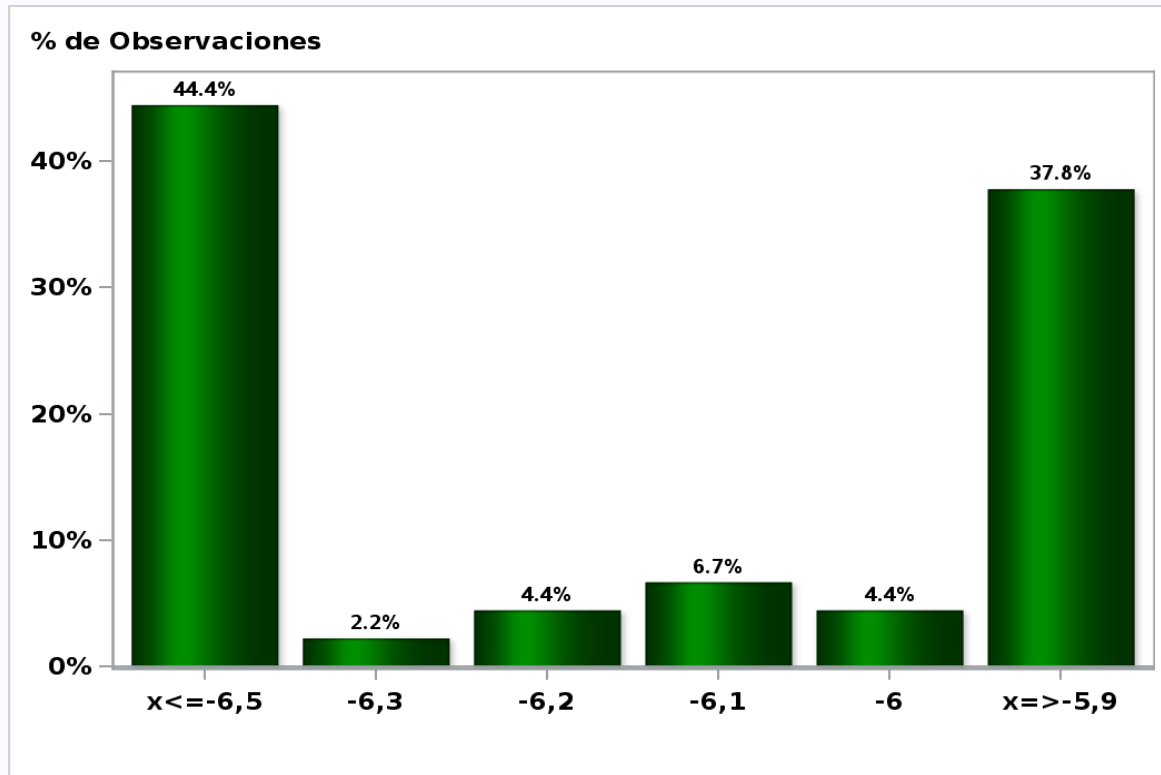


[Click to view summary table](#)



Monthly Survey On Expectations August 2020  
GDP No Mining year 2020 (12-month change)

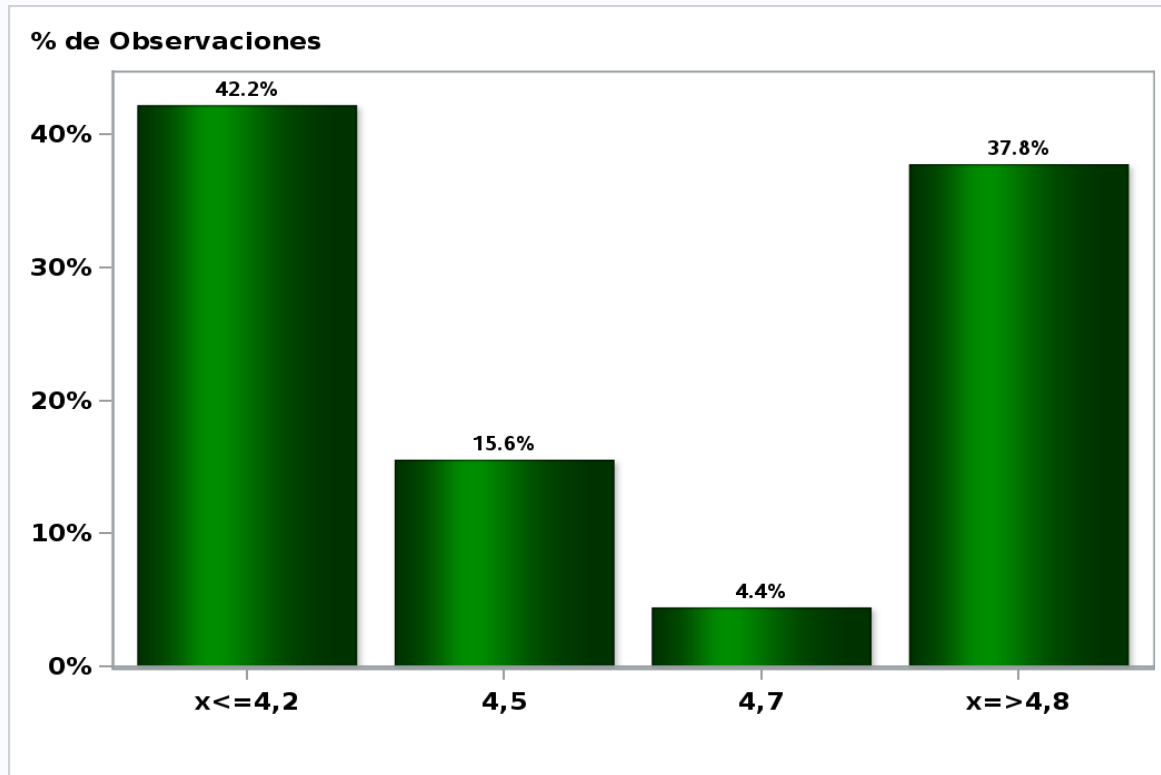
Answers: 45 Median: -6,2%



[Click to view summary table](#)

**Monthly Survey On Expectations August 2020**  
**GDP No Mining year 2021 (12-month change)**

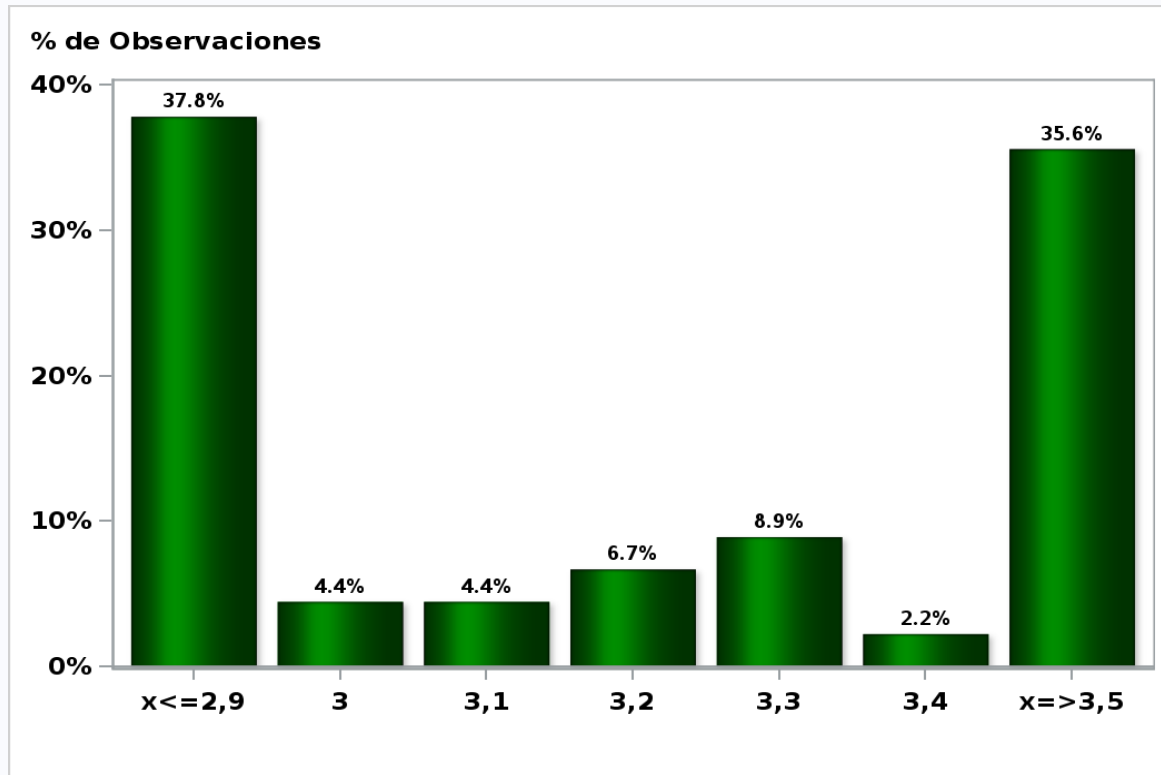
**Answers: 45 Median: 4,5%**



[Click to view summary table](#)

Monthly Survey On Expectations August 2020  
GDP No Mining year 2022 (12-month change)

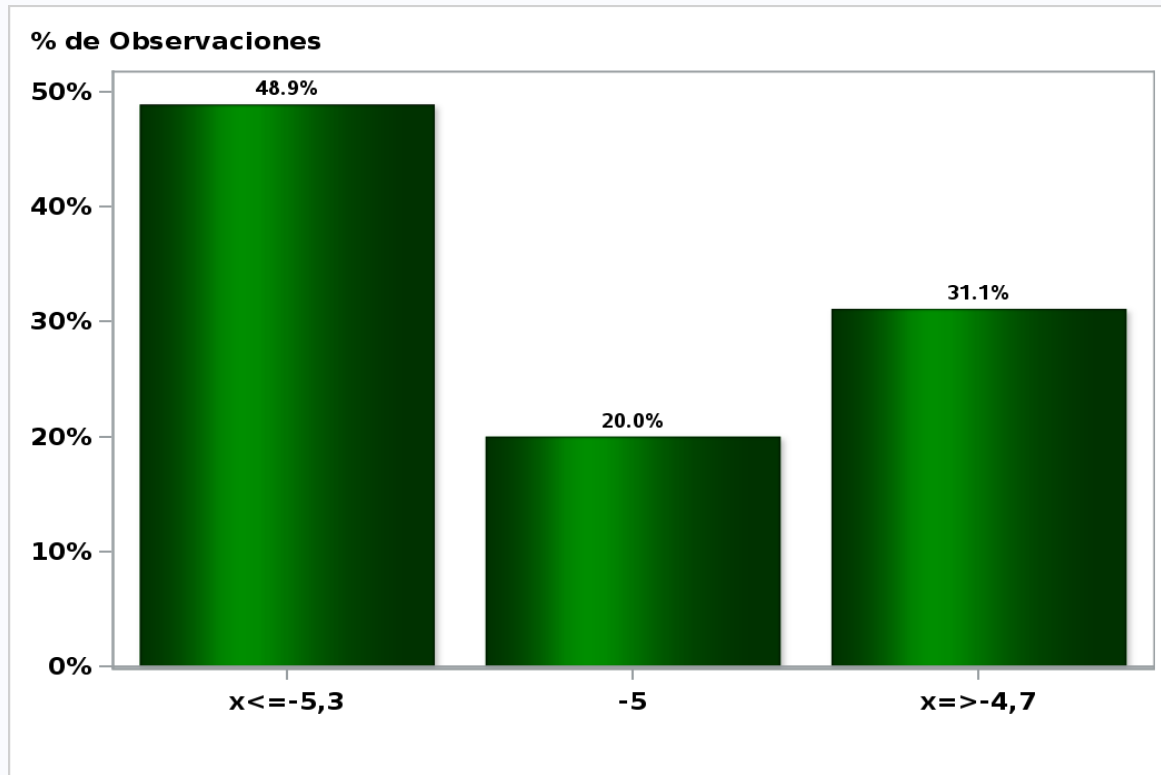
Answers: 45 Median: 3,2%



[Click to view summary table](#)

**Monthly Survey On Expectations August 2020**  
**HFC including NPO year 2020 (12-month change)**

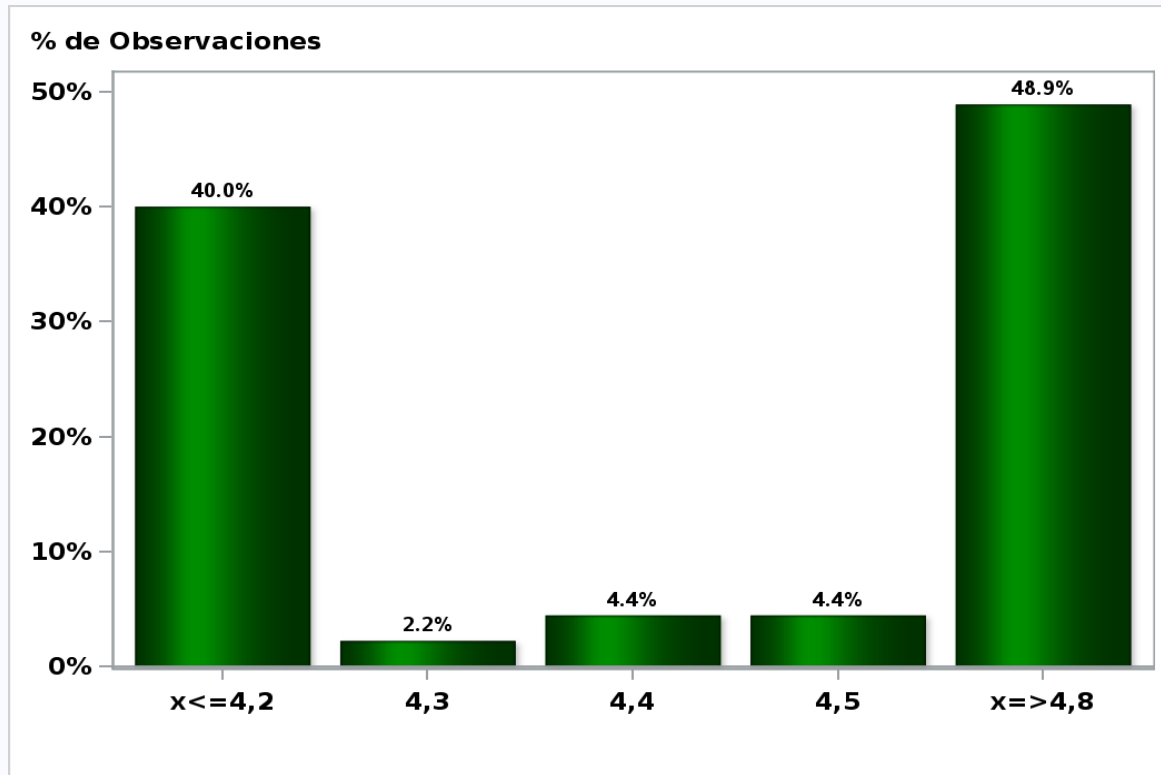
**Answers: 45 Median: -5%**



[Click to view summary table](#)

**Monthly Survey On Expectations August 2020**  
**HFC including NPO year 2021 (12-month change)**

**Answers: 45 Median: 4,5%**

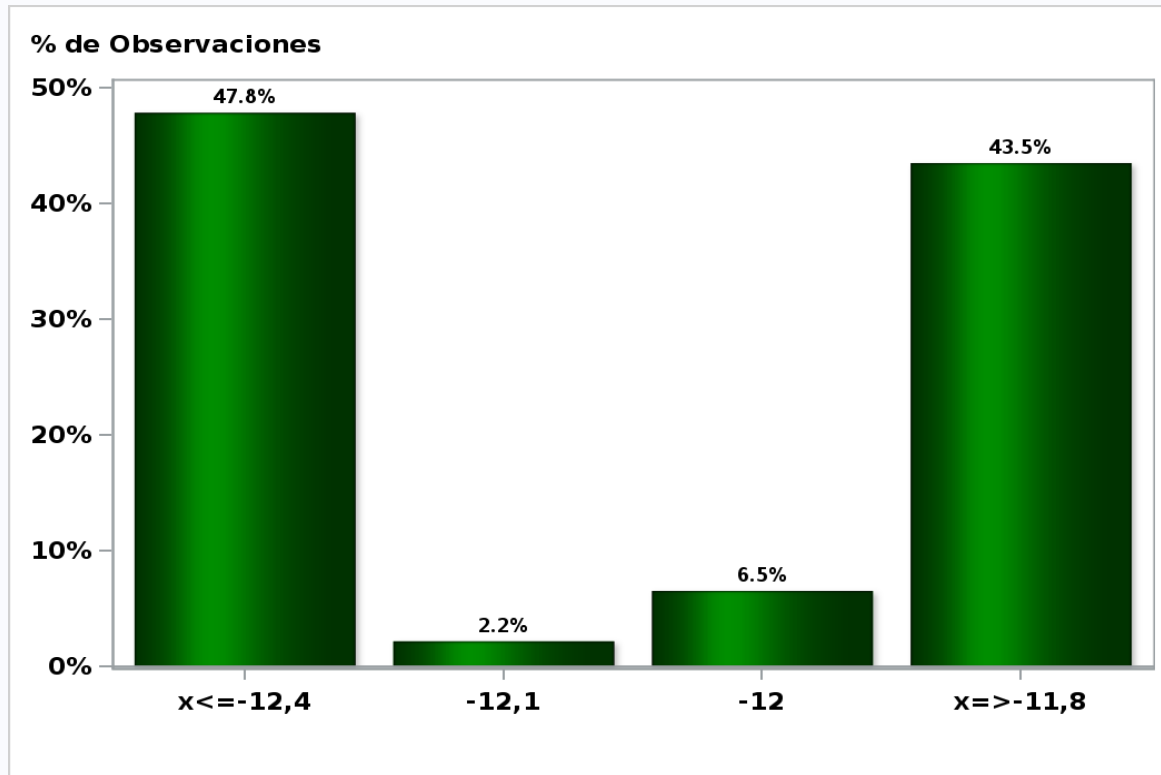


[Click to view summary table](#)

## Monthly Survey On Expectations August 2020

GFCF year 2020 (12-month change)

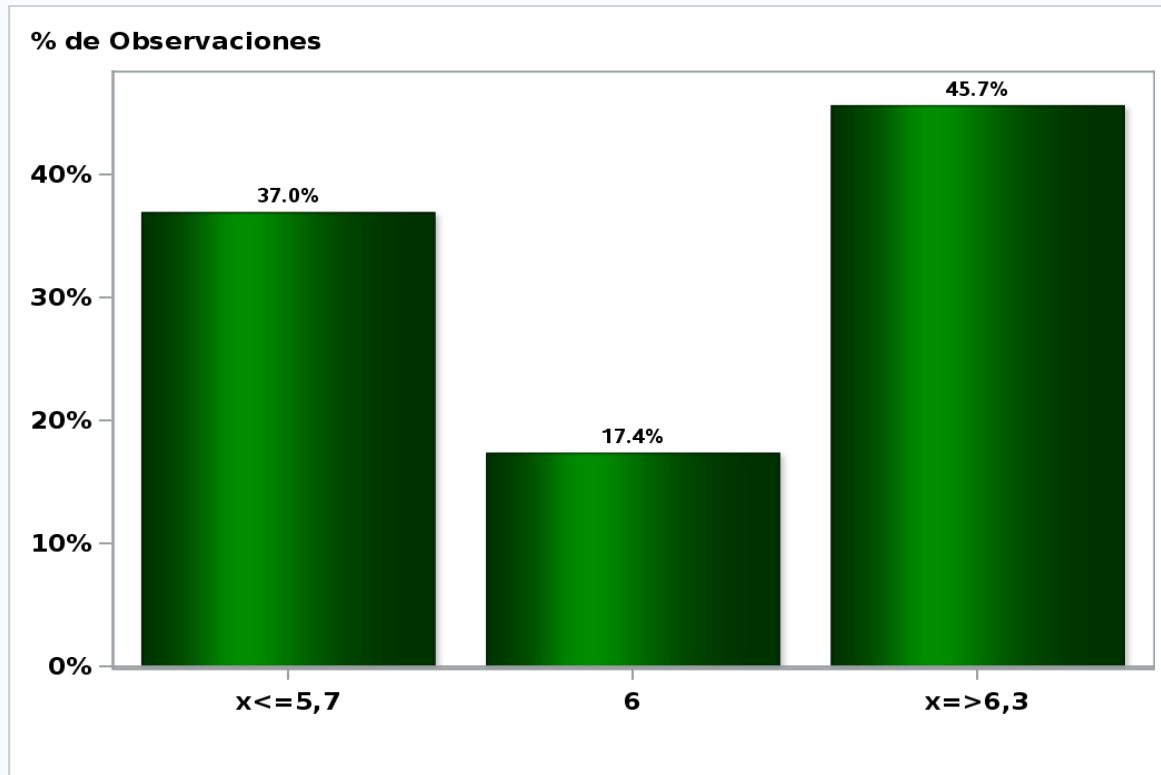
Answers: 46 Median: -12,1%



[Click to view summary table](#)

Monthly Survey On Expectations August 2020  
GFCF year 2021 (12-month change)

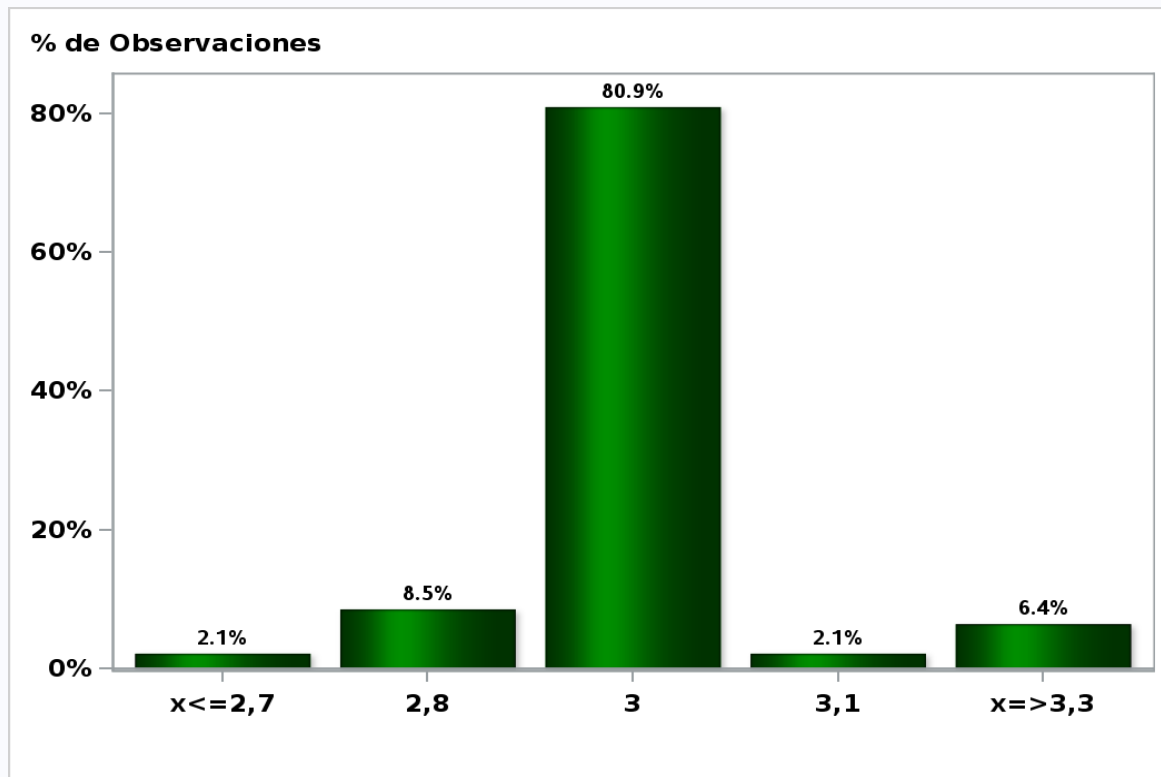
Answers: 46 Median: 6%



[Click to view summary table](#)

**Monthly Survey On Expectations August 2020**  
**Average Inflation years 2023-2027 (12-month change)**

**Answers: 47 Median: 3%**

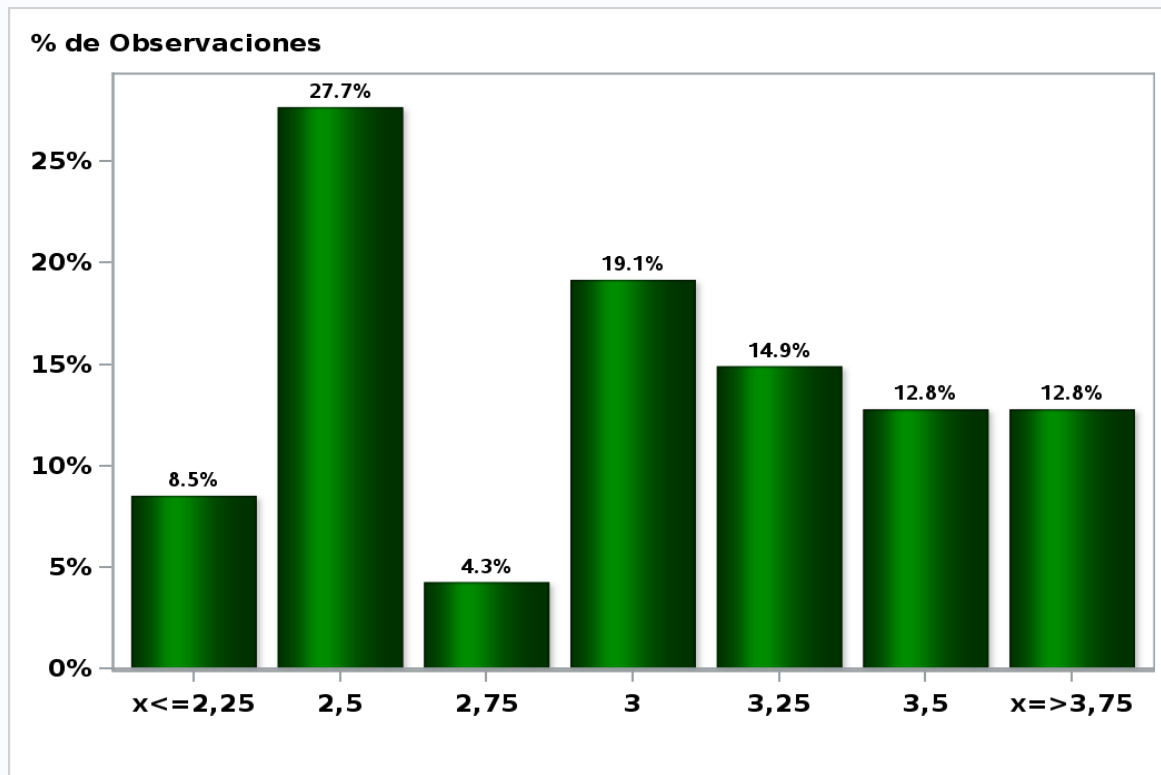


[Click to view summary table](#)



**Monthly Survey On Expectations August 2020**  
**Average Monetary Policy rate target years 2023-2027**

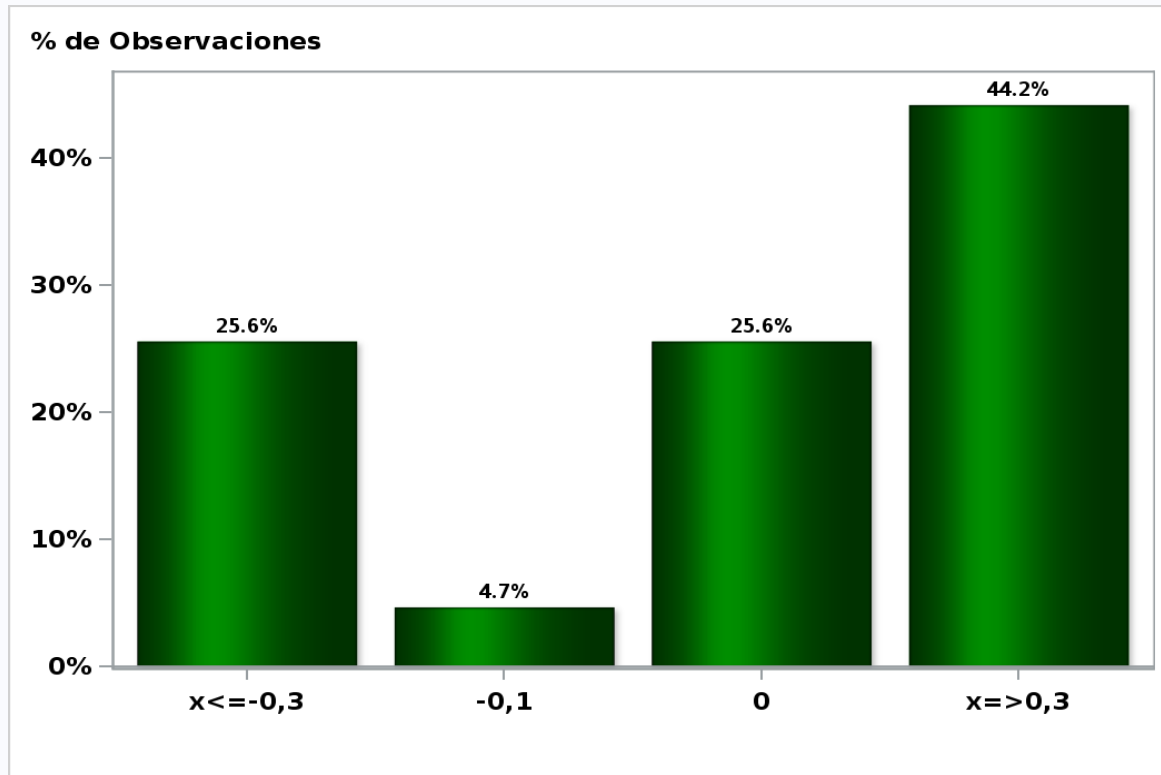
**Answers: 47 Median: 3%**



[Click to view summary table](#)

**Monthly Survey On Expectations August 2020**  
**Average Exchange Rate years 2023-2027 (12-month change)**

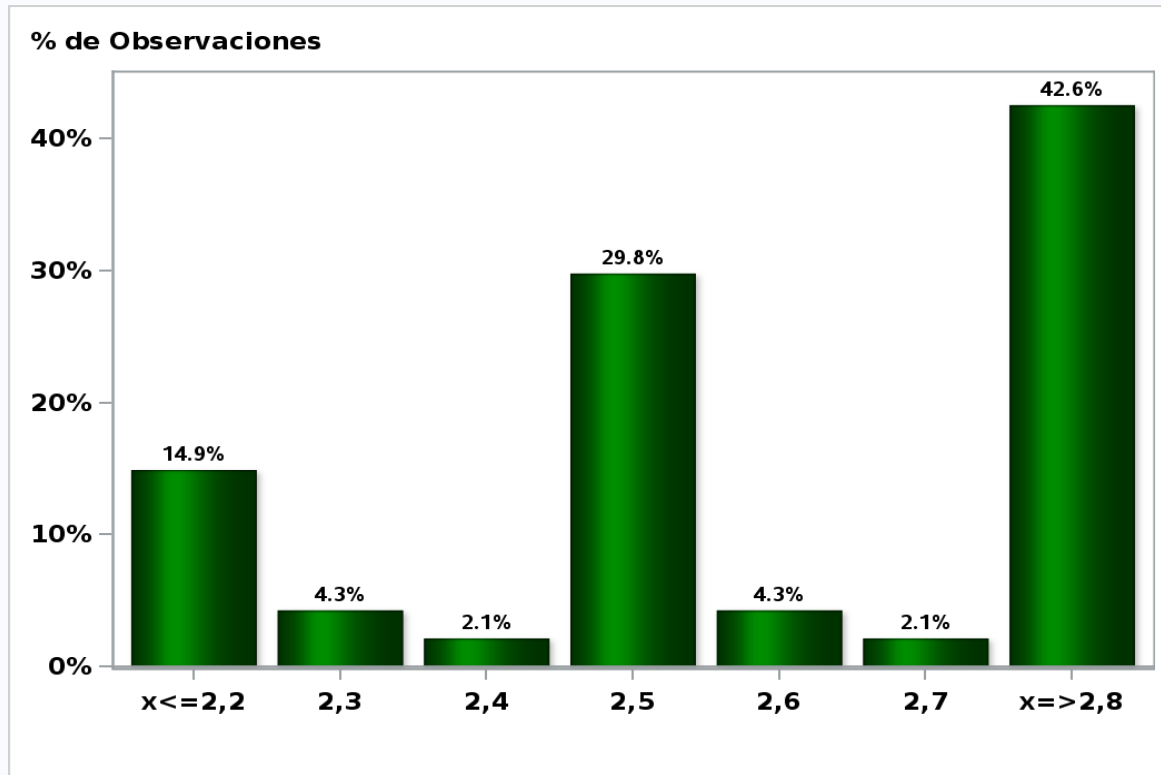
**Answers: 43 Median: 0%**



[Click to view summary table](#)

**Monthly Survey On Expectations August 2020**  
**Average GDP years 2023-2027 (12-month change)**

**Answers: 47 Median: 2,5%**



[Click to view summary table](#)