





















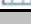






MONTHLY SURVEY ON EXPECTATIONS November 2012

Sent on November 5, 2012

Deadline for responses: November 9, 2012

		Survey November 2012			
		Median	decile 1	decile 9	Answers
Inflation (% change)					
Current month (monthly change)		0,1	-0,1	0,3	59
Next month (monthly change)		0,2	0,0	0,4	59
In eleven months (12-month change)		3,0	2,5	3,1	59
In twenty three months (12-month change)		3,0	3,0	3,2	58
December 2013 (12-month change)		3,0	2,7	3,1	59
December 2014 (12-month change)		3,0	3,0	3,1	58
Monetary Policy rate target (%) (*)					
Current month		5,00	5,00	5,00	59
Next month		5,00	5,00	5,00	59
In five months		5,00	4,80	5,30	59
December 2013		5,00	4,50	5,50	59
In eleven months		5,00	4,70	5,50	59
In seventeen months		5,00	4,50	5,50	57
In twenty three months		5,00	4,50	5,50	57
5-Year BCU (%) (*)					
In two months		2,4	2,2	2,5	56
In eleven months		2,5	2,2	2,7	56
In twenty three months forward		2,5	2,2	2,8	54
5-Year BCP (%) (*)					
In two months		5,4	5,2	5,5	56
In eleven months		5,4	5,2	5,8	56
In twenty three months forward		5,5	5,1	5,9	53
Exchange Rate (CH \$ per US\$ 1) (*)					
In two months		480	470	490	57
In eleven months		490	474	503	57
In twenty three months forward		500	470	515	54
IMACEC (Monthly Activity Index)					
One month ago		5,0	4,1	6,3	59
GDP (12-month change)					
Within calendar quarter of the survey		4,8	4,3	5,3	58
Year 2012		5,2	5,0	5,4	59
Year 2013		4,7	4,4	5,3	58
Year 2014		4,8	4,5	5,4	56

(*) End of the month

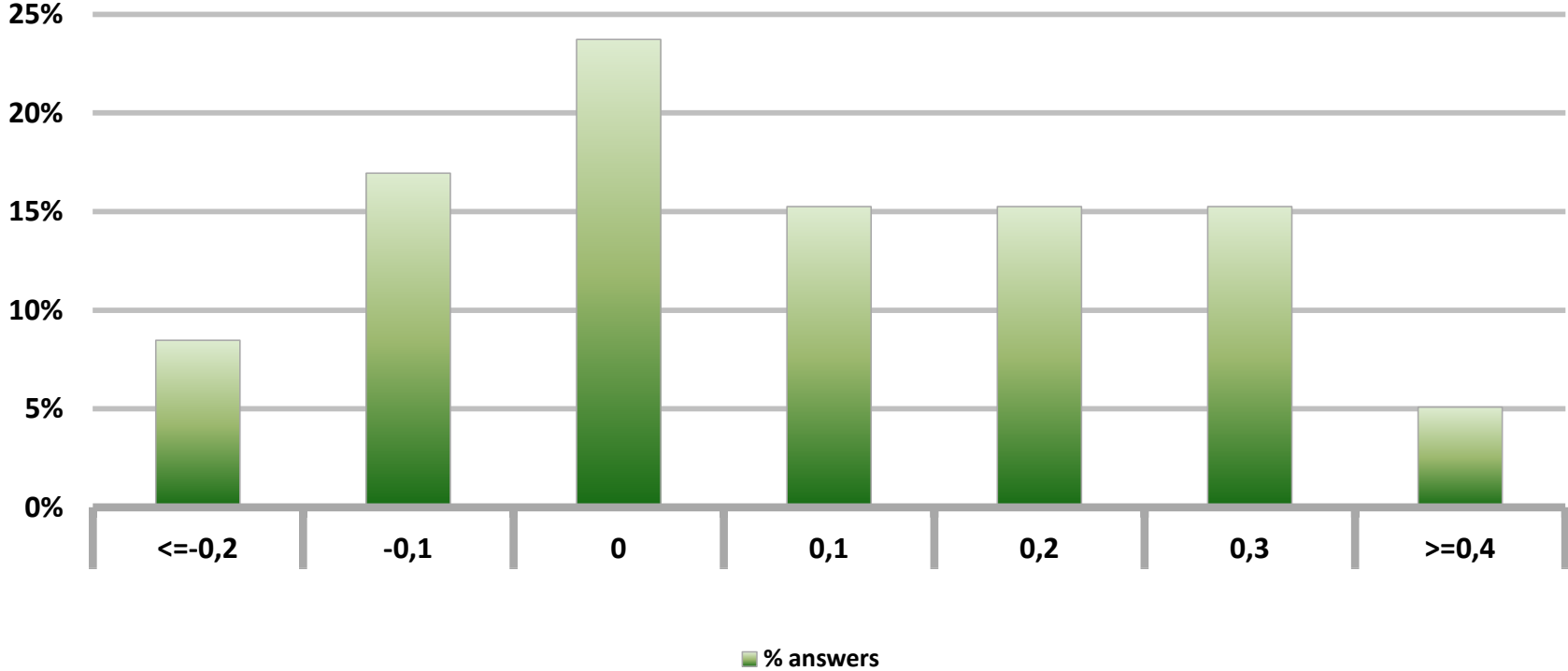
Monthly survey of selected academics, consultants, and executives or advisors of financial institutions and corporations. It is completed the day after the publication of the CPI or IMACEC (Monthly activity index), whichever the last known, and it is published the day after its reception, at 8:30 hrs. approximately (www.bcentral.cl, in "Economic Statistics", under "Economic Expectations Survey").

The sample size of surveyed analysts was increased since April 2011.

Monthly Survey On Expectations November 2012

Inflation current month (monthly change)

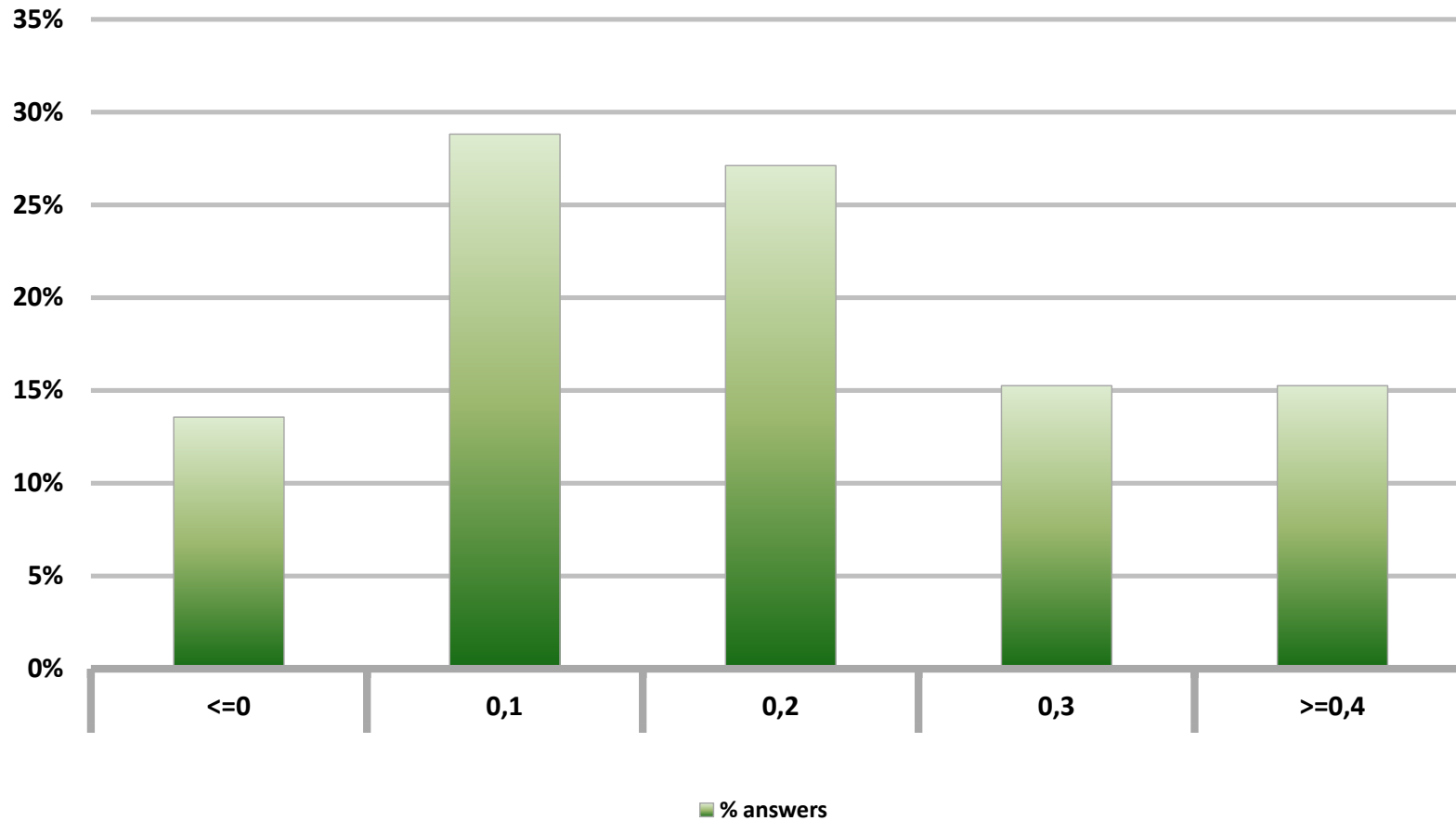
Answers: 59



Monthly Survey On Expectations November 2012

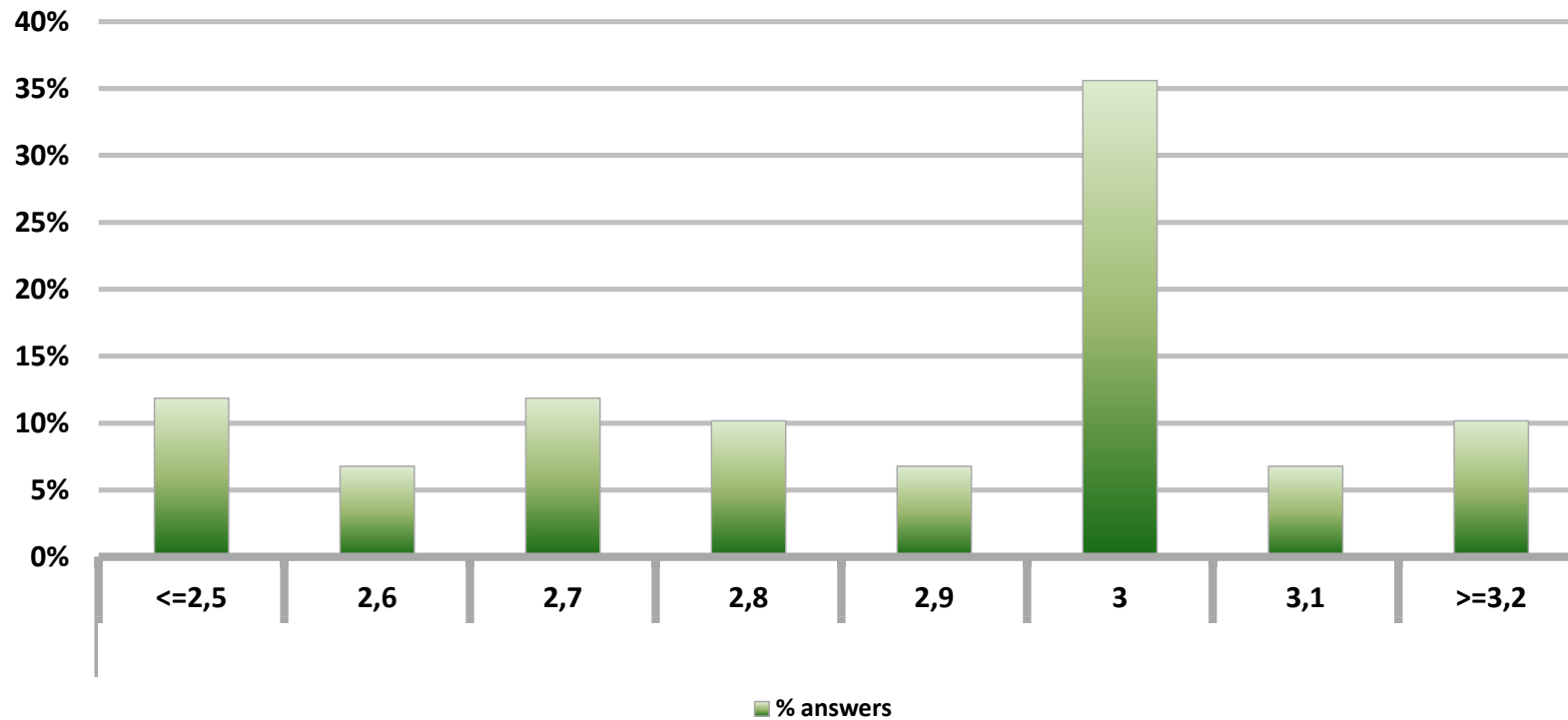
Inflation next month (monthly change)

Answers: 59



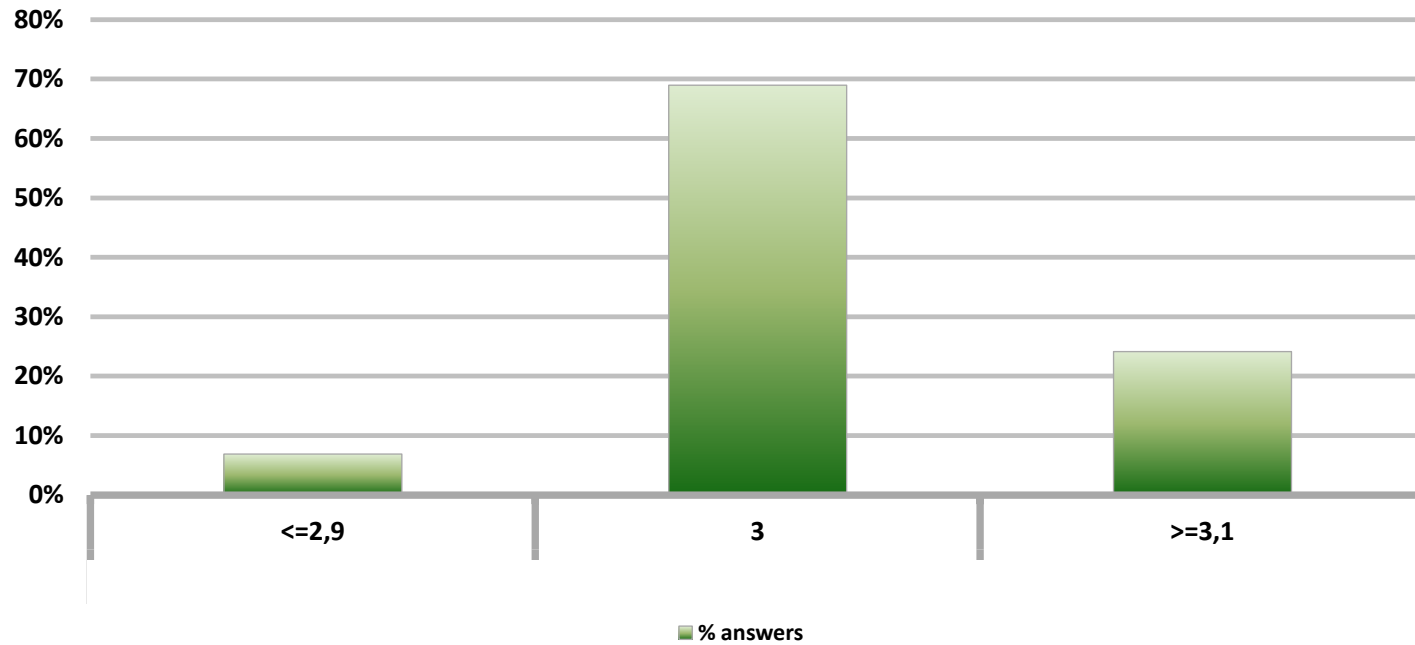
Monthly Survey On Expectations November 2012 Inflation in eleven months (12-month change)

Answers: 59



Monthly Survey On Expectations November 2012 Inflation in twenty three months (12-month change)

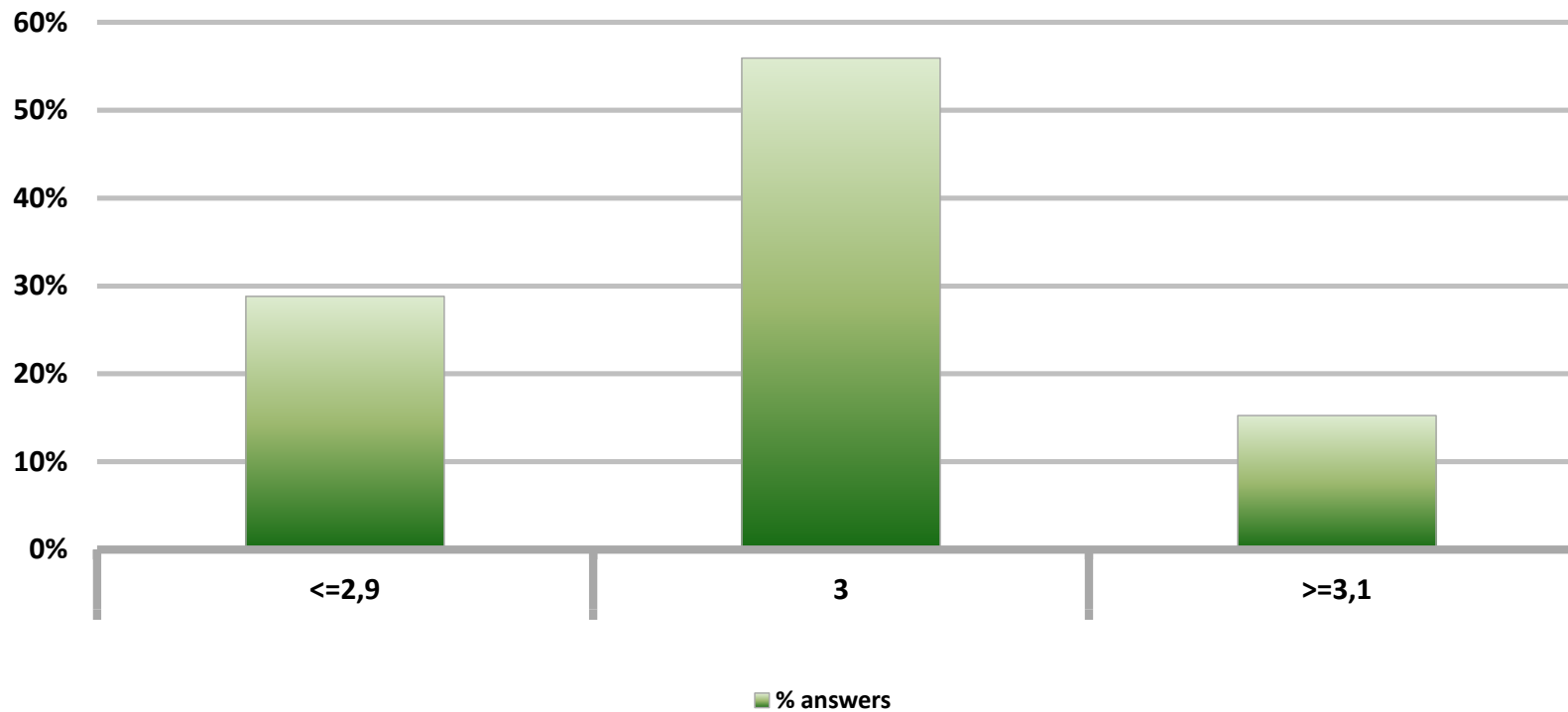
Answers: 58



Monthly Survey On Expectations November 2012

Inflation december 2013 (12-month change)

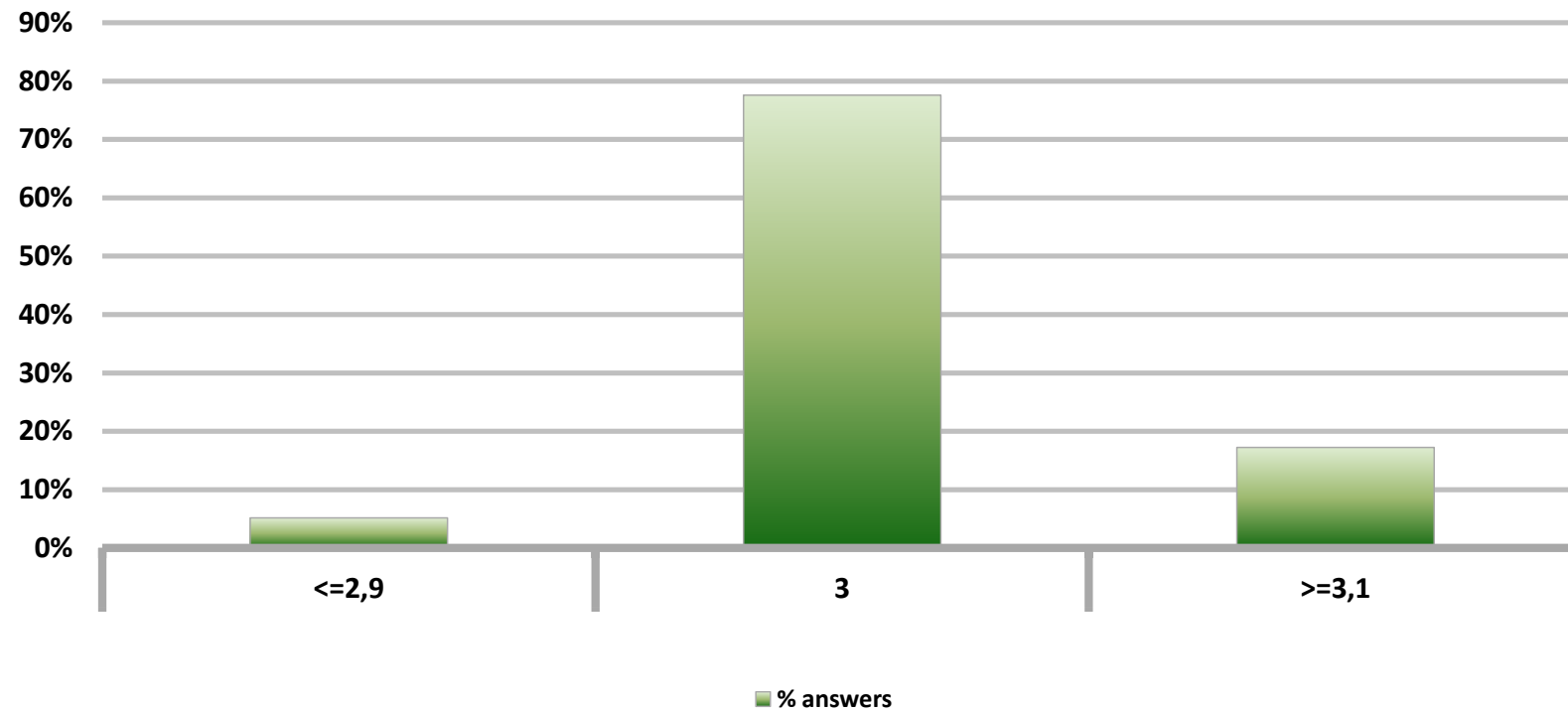
Answers: 59



Monthly Survey On Expectations November 2012

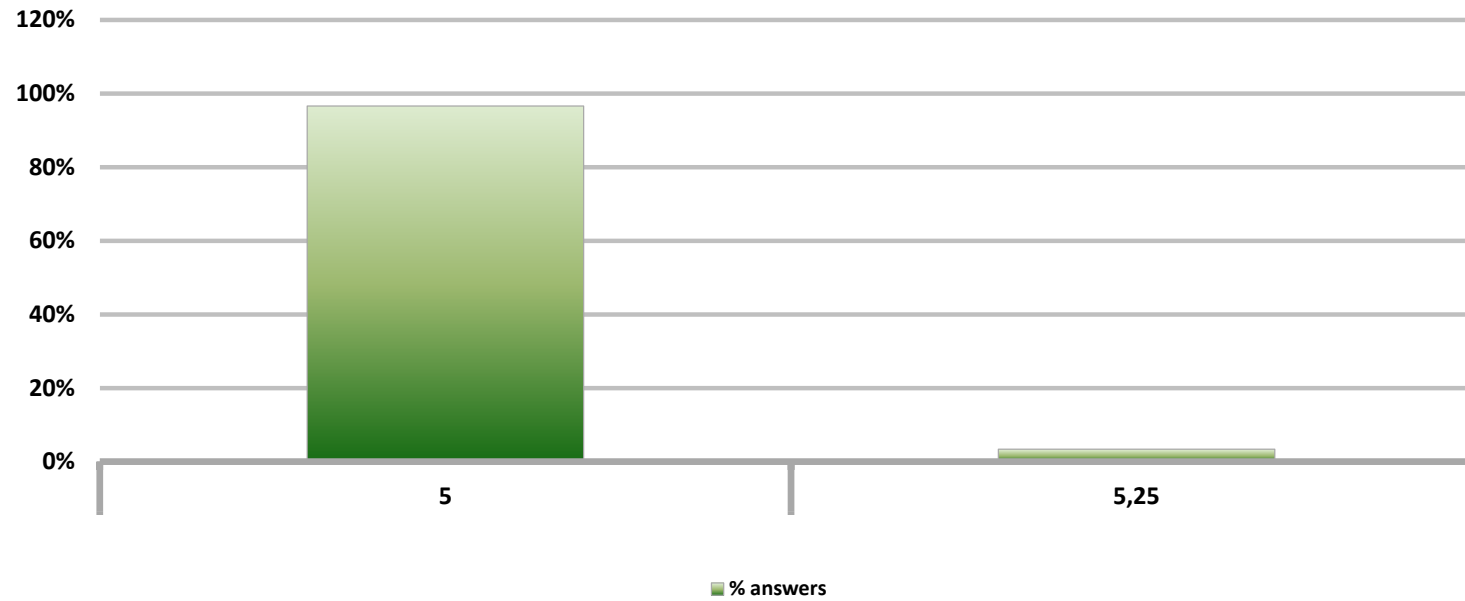
Inflation december 2014 (12-month change)

Answers: 58



Monthly Survey On Expectations November 2012
Monetary Policy rate target current month

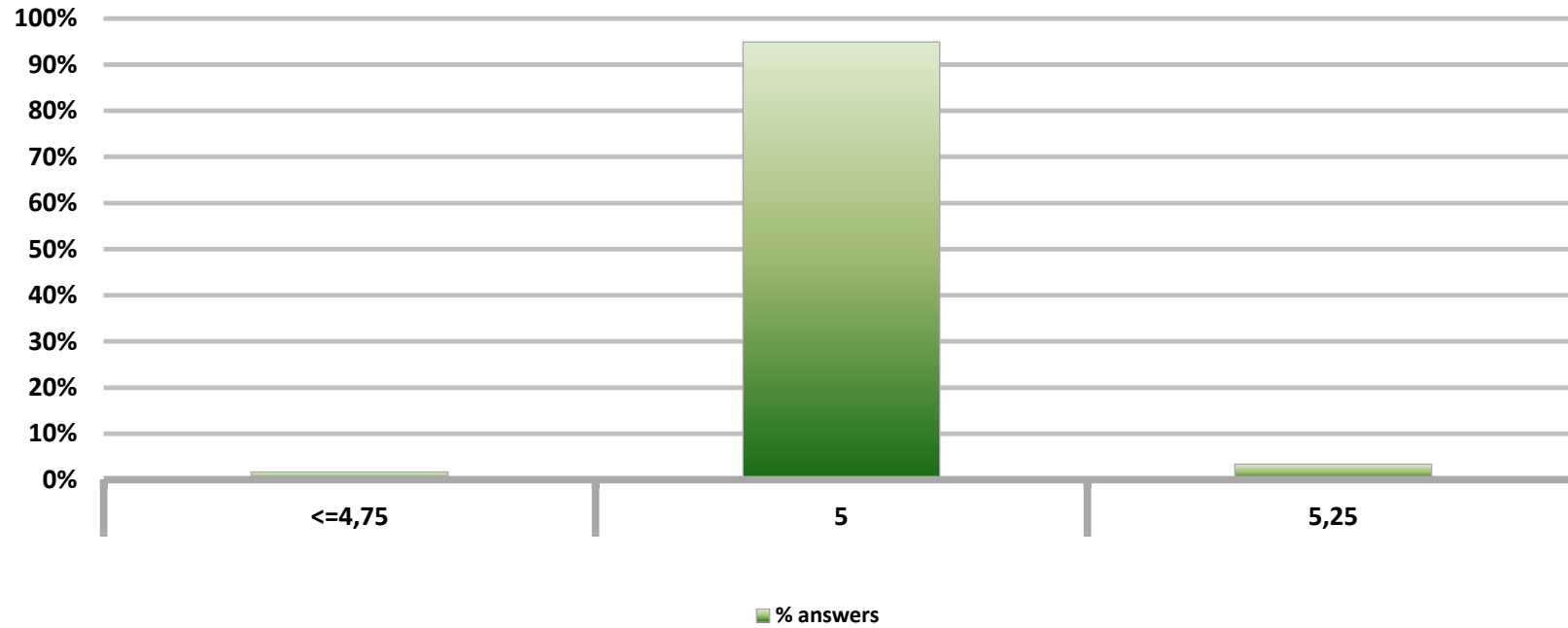
Answers: 59



Monthly Survey On Expectations November 2012

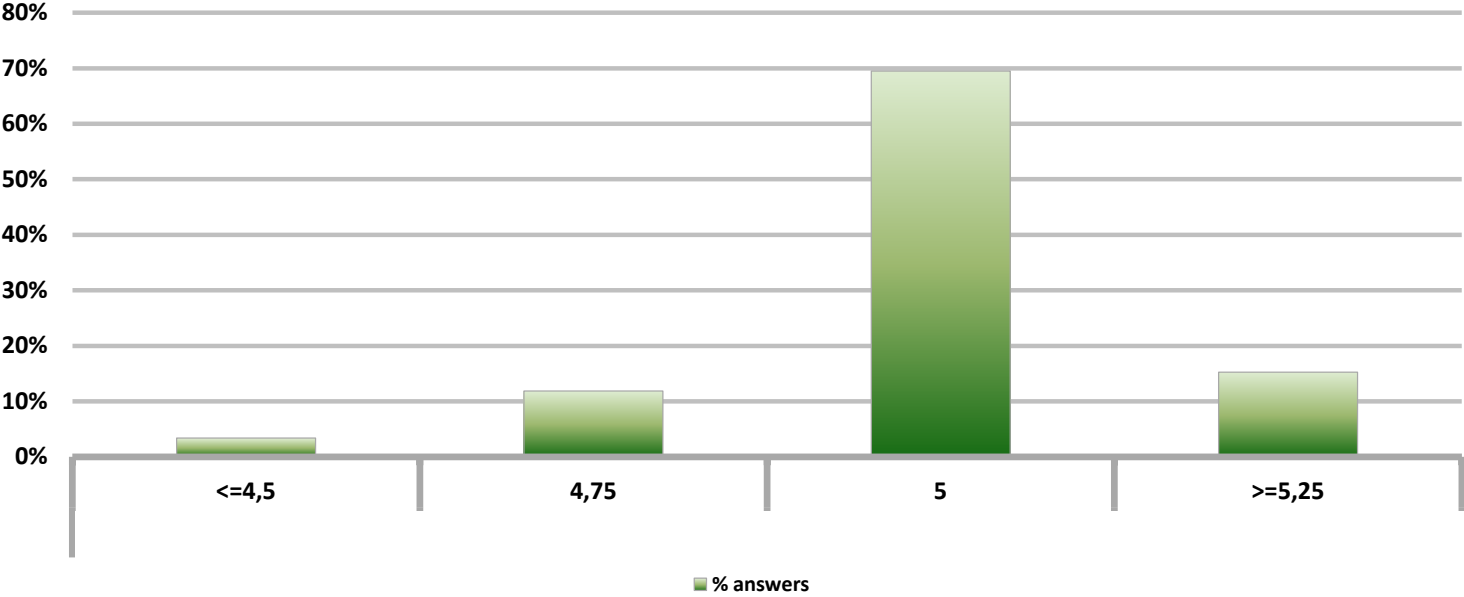
Monetary Policy rate target next month

Answers: 59



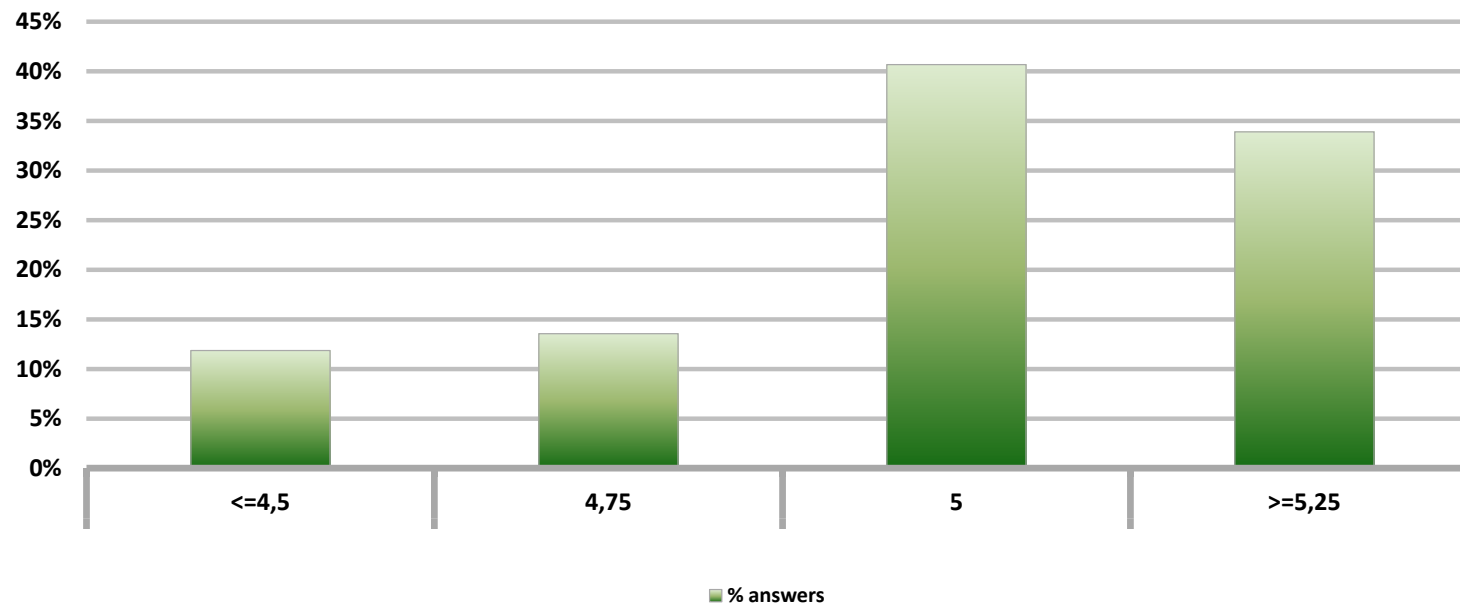
Monthly Survey On Expectations November 2012
Monetary Policy rate target In five months

Answers: 59



Monthly Survey On Expectations November 2012
Monetary Policy rate target december 2013

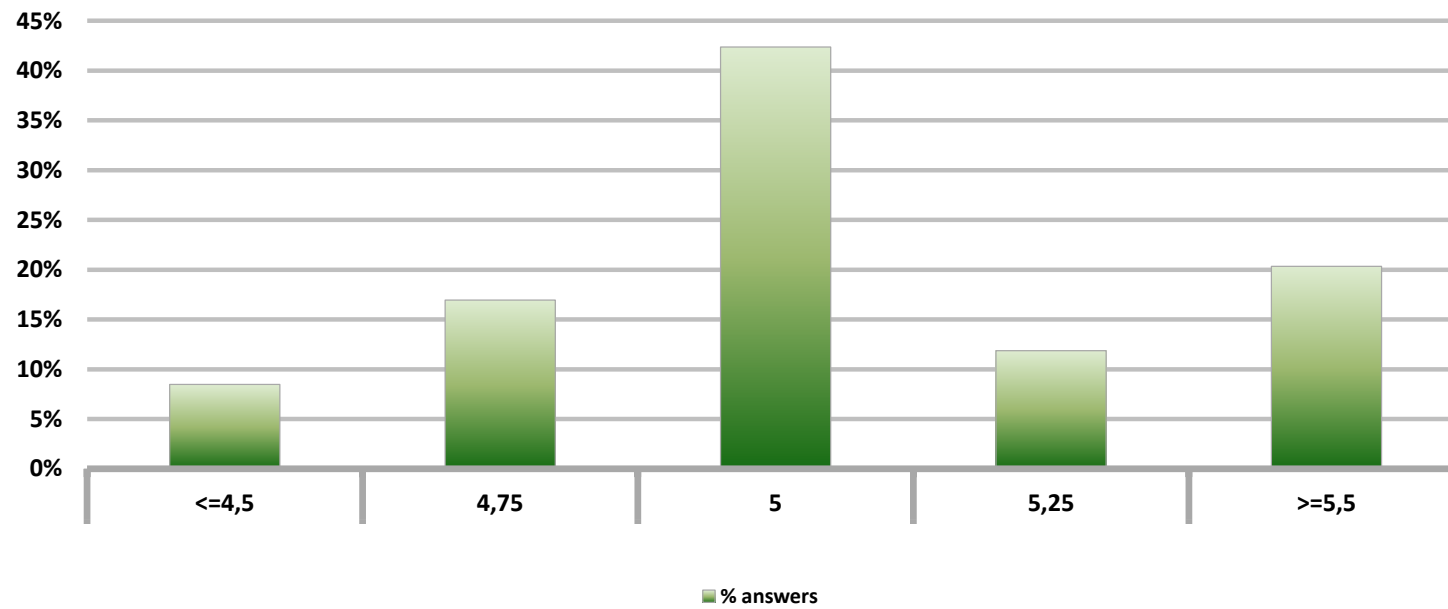
Answers: 59



Monthly Survey On Expectations November 2012

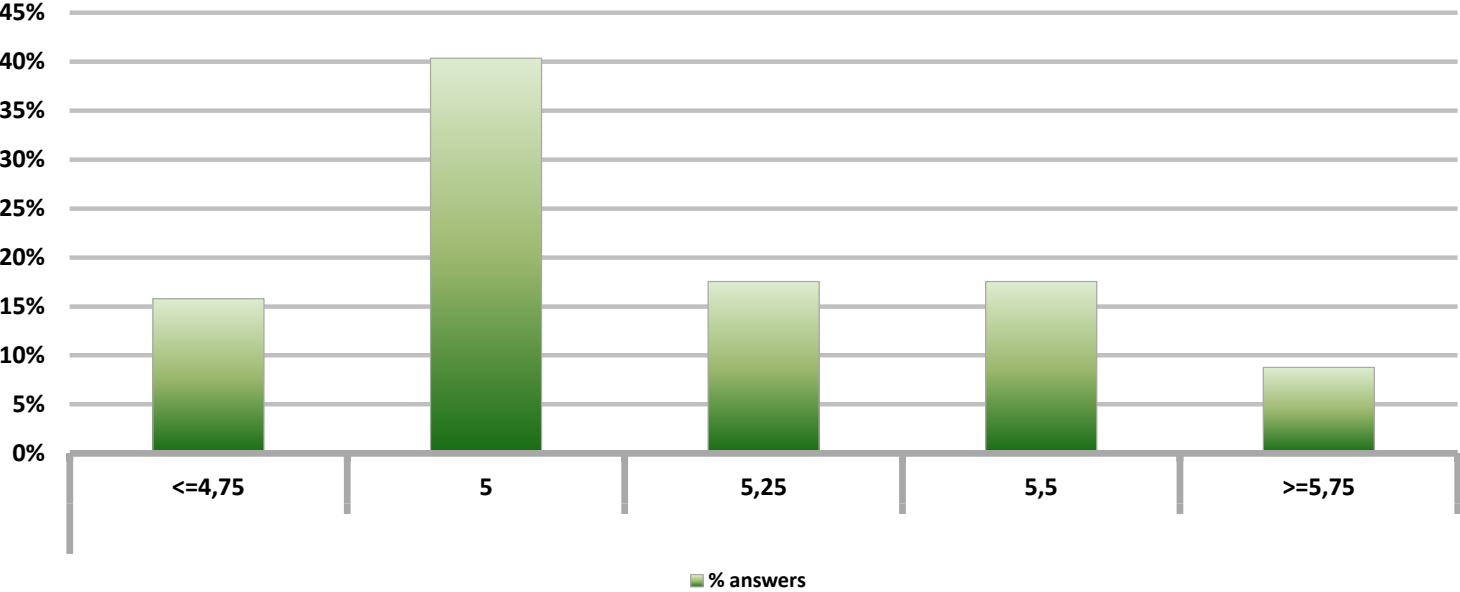
Monetary Policy rate target in eleven months

Answers: 59



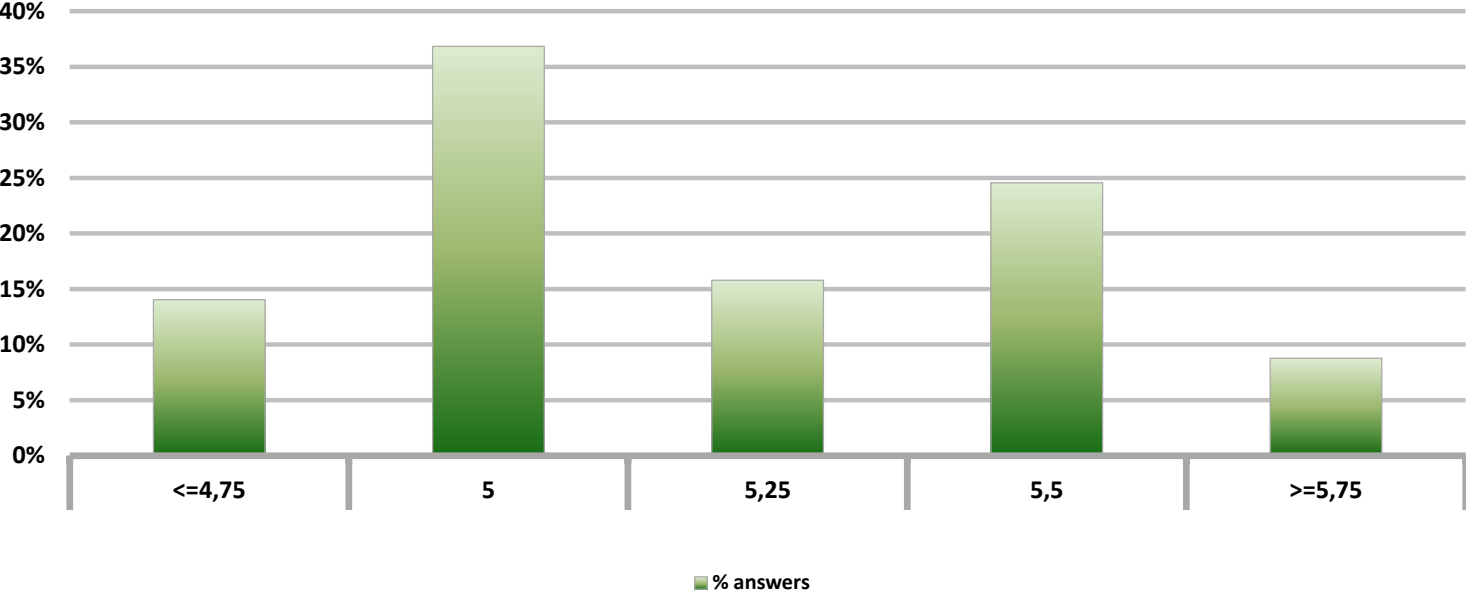
Monthly Survey On Expectations November 2012
Monetary Policy rate target in seventeen months

Answers: 57



Monthly Survey On Expectations November 2012
Monetary Policy rate target in twenty three months

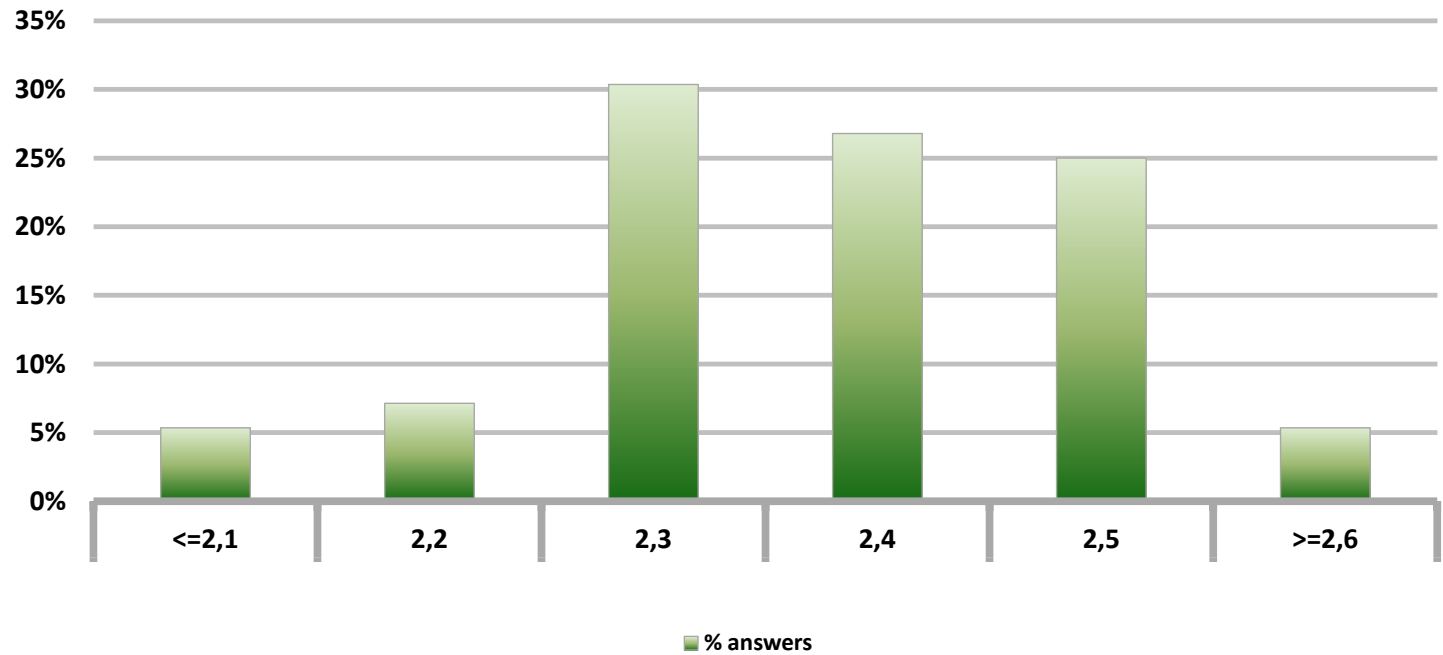
Answers: 57



Monthly Survey On Expectations November 2012

5-Year BCU In two months

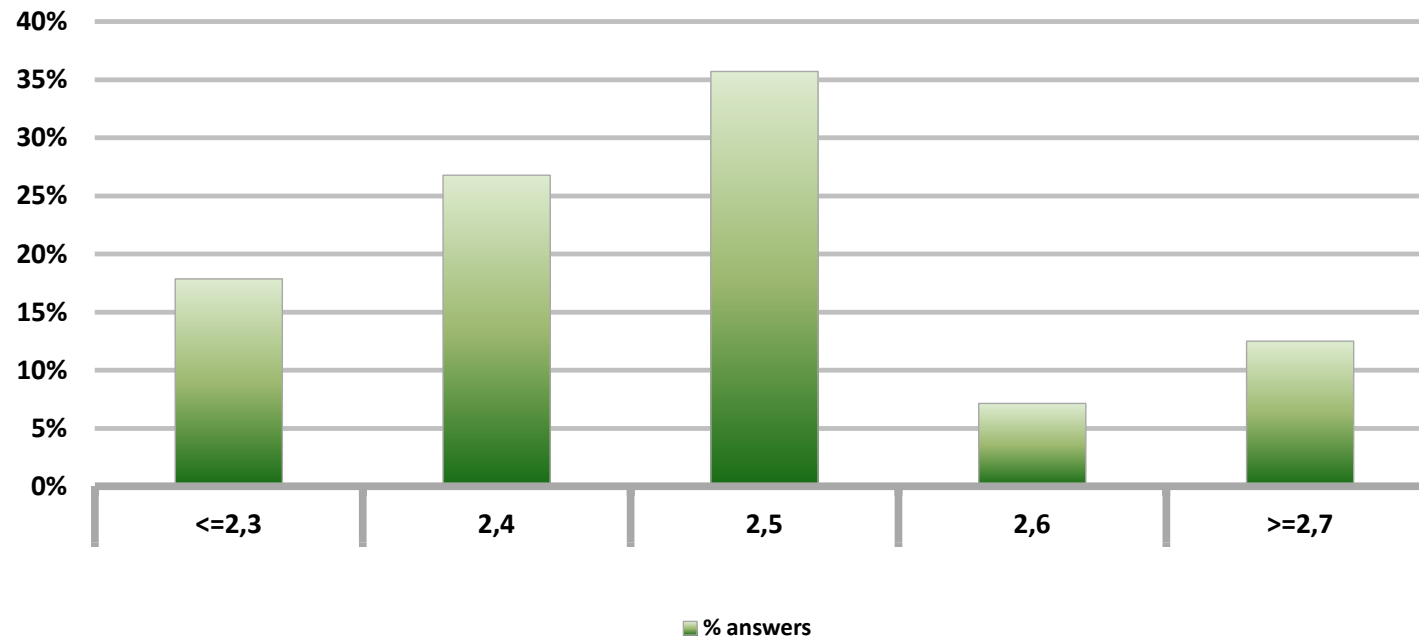
Answers: 56



Monthly Survey On Expectations November 2012

5-Year BCU in eleven months

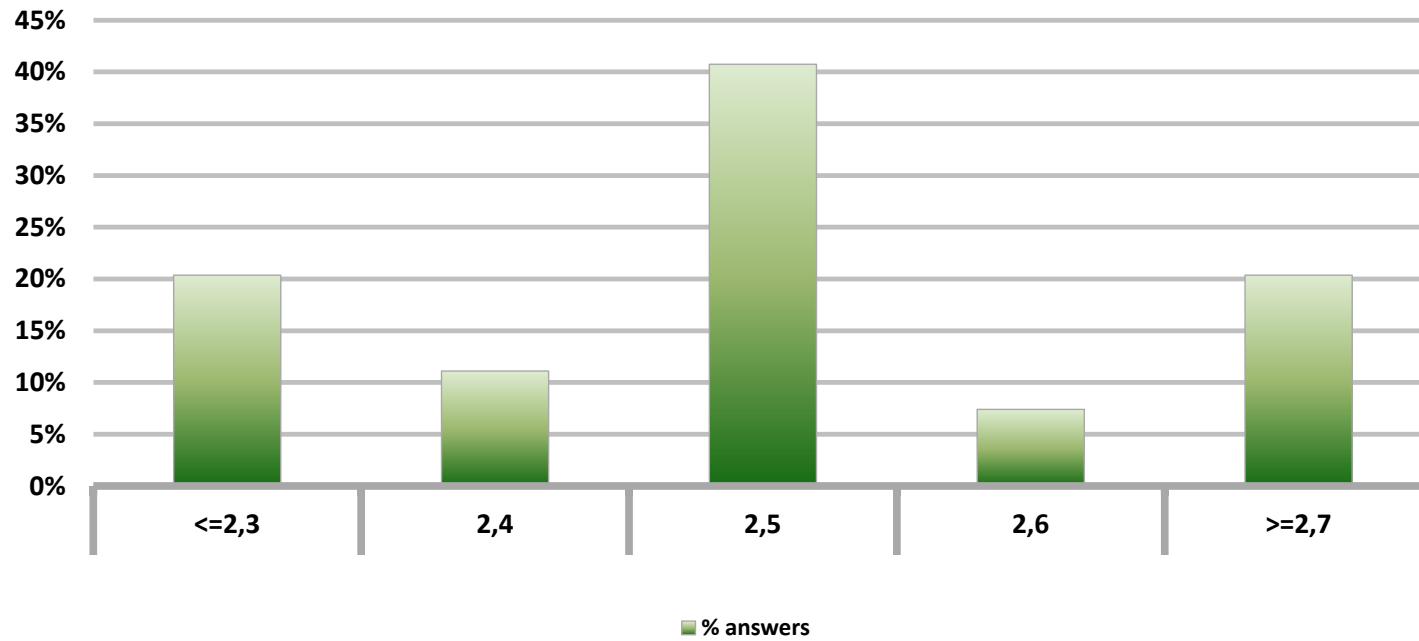
Answers: 56



Monthly Survey On Expectations November 2012

5-Year BCU in twenty three months forward

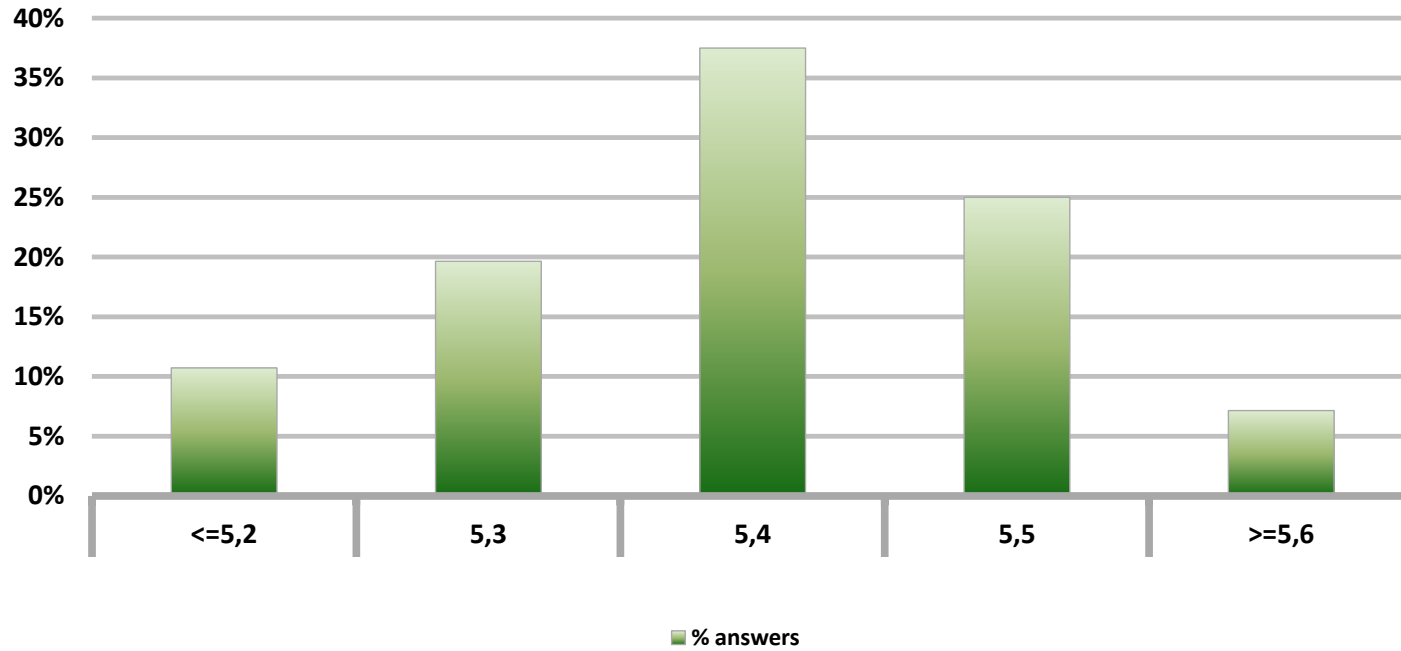
Answers: 54



Monthly Survey On Expectations November 2012

5-Year BCP in two months

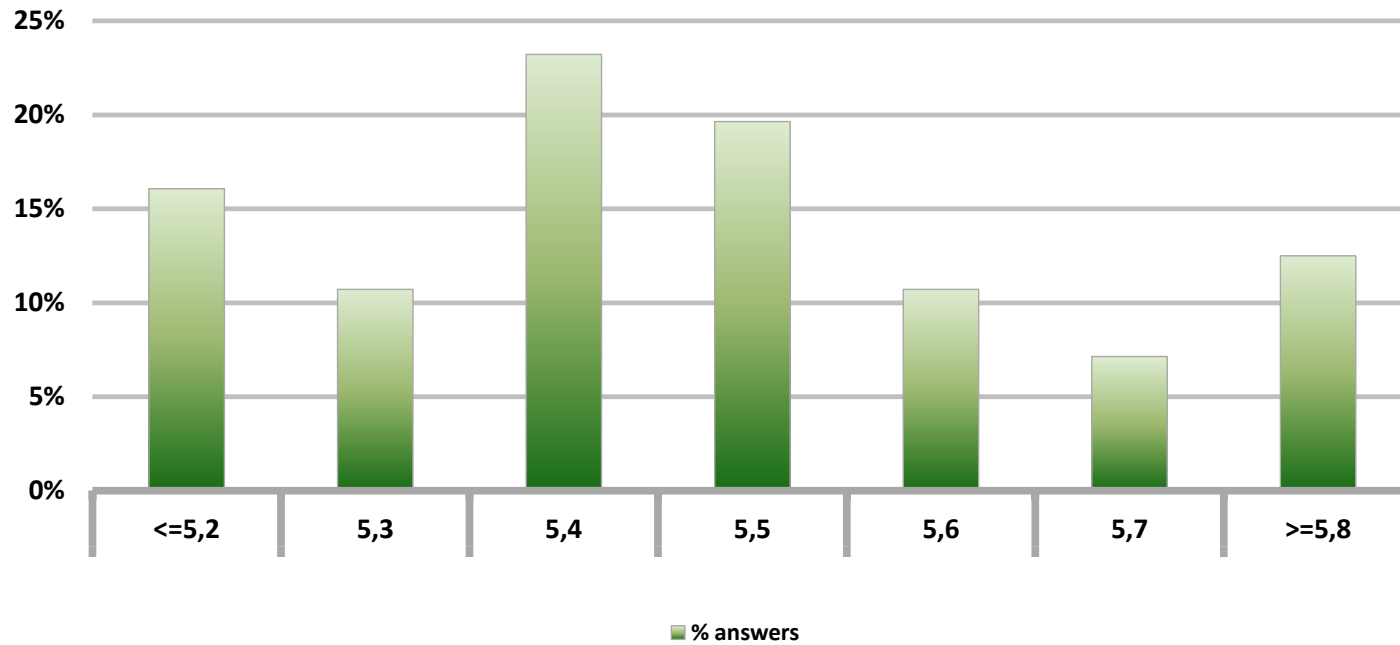
Answers: 56



Monthly Survey On Expectations November 2012

5-Year BCP in eleven months

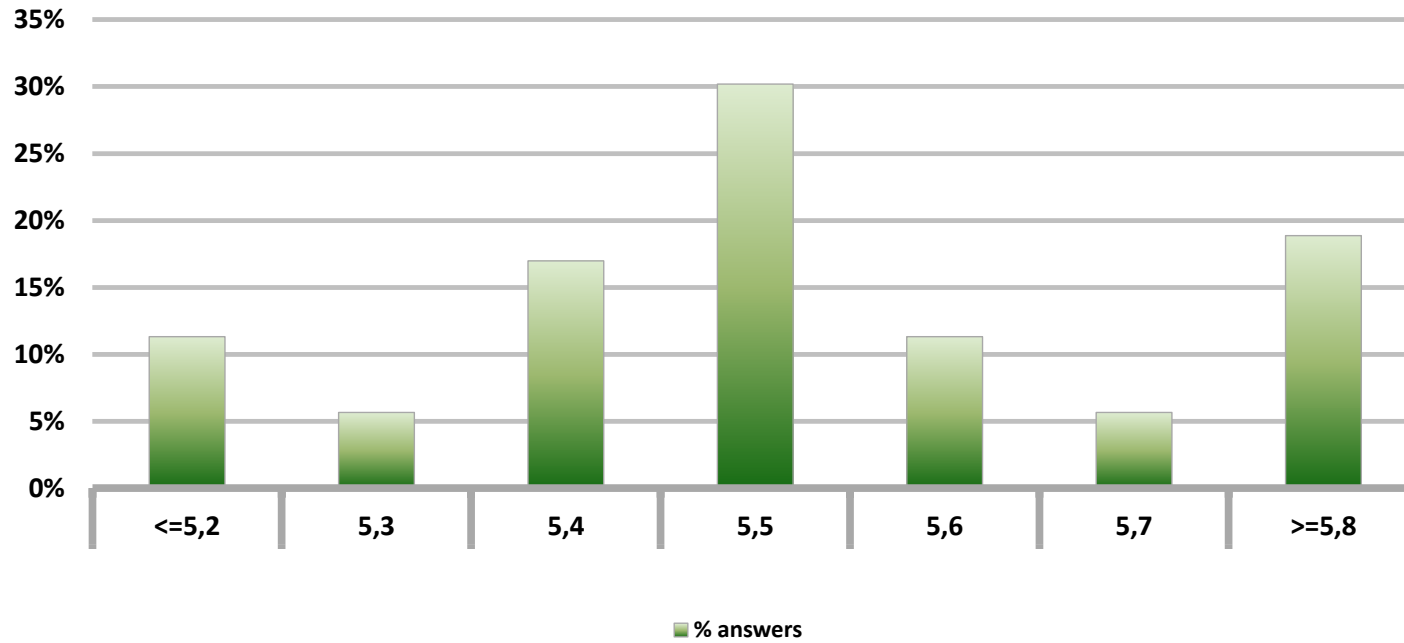
Answers: 56



Monthly Survey On Expectations November 2012

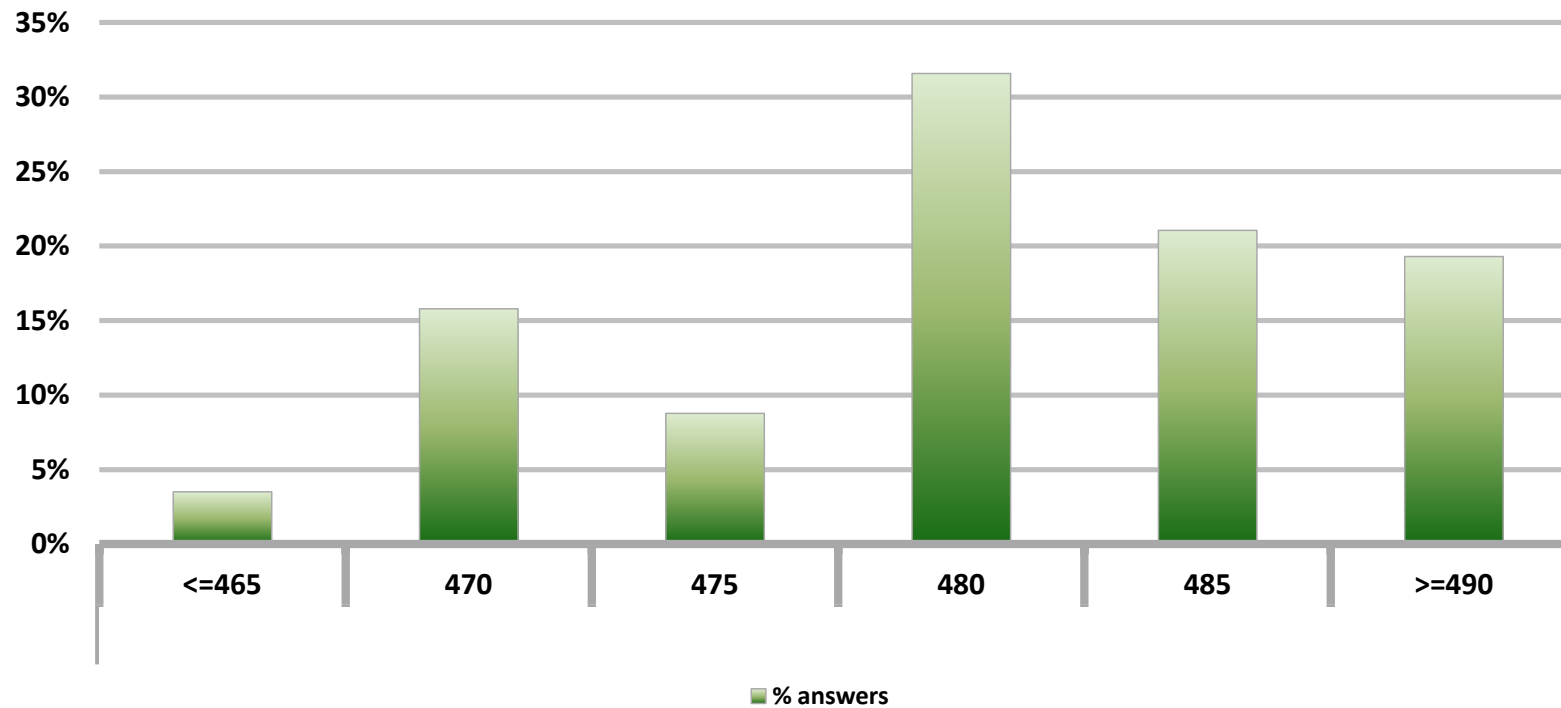
5-Year BCP in twenty three months forward

Answers: 53



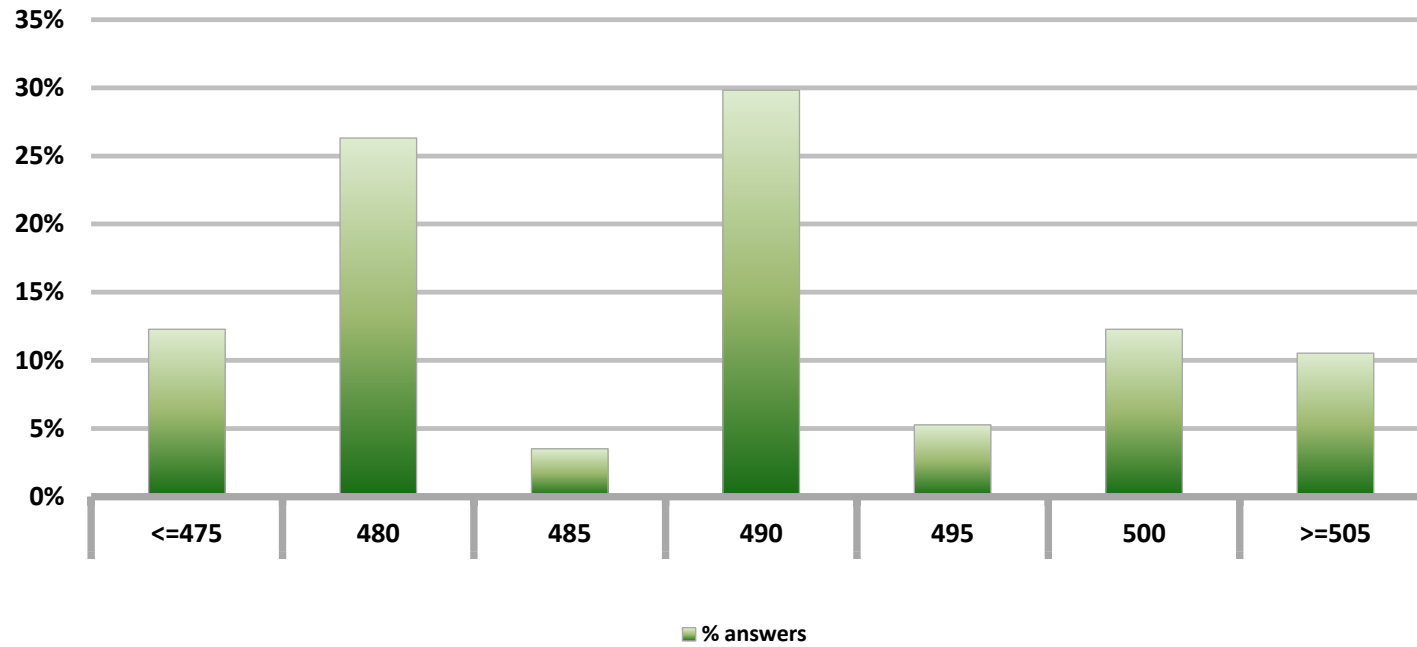
Monthly Survey On Expectations November 2012 Exchange Rate in two months (CH \$ per US\$)

Answers: 57



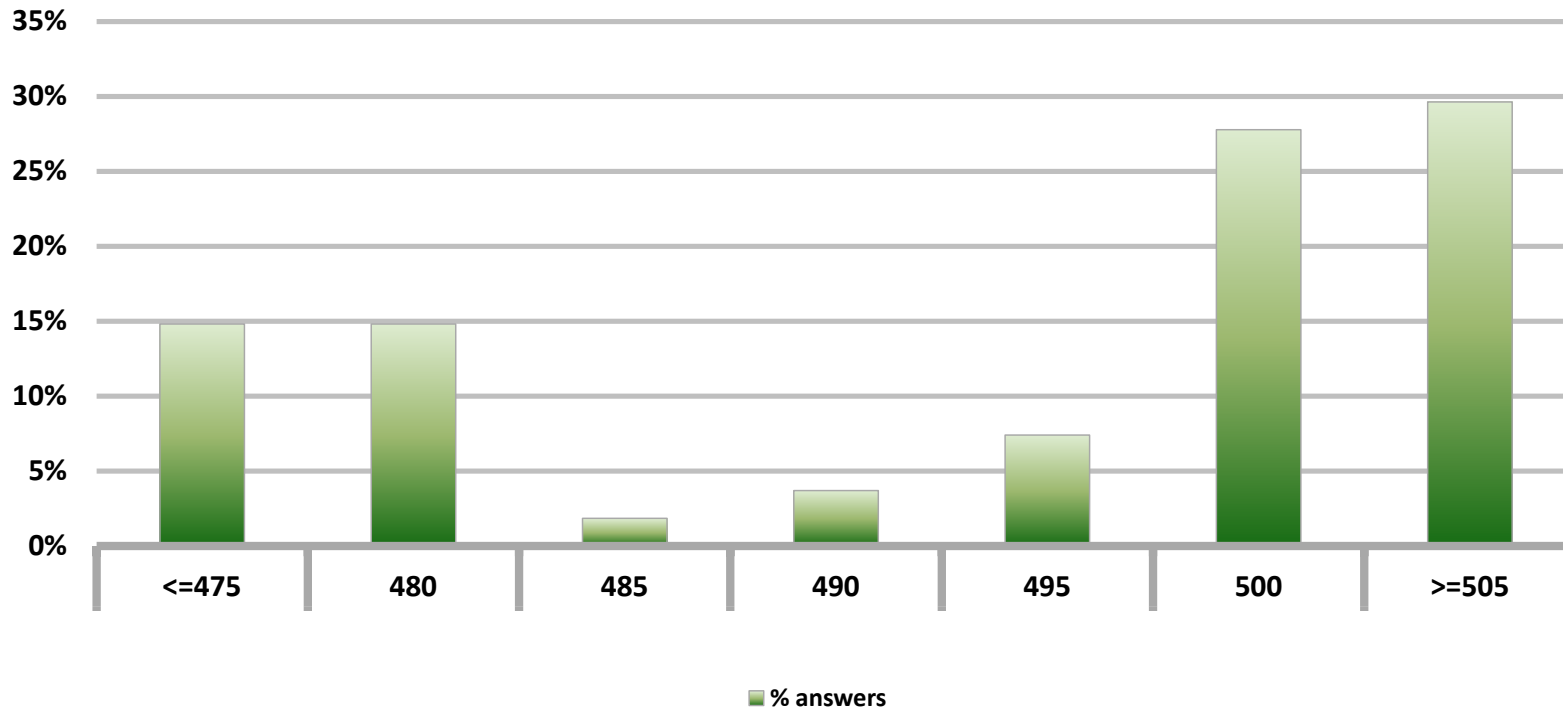
Monthly Survey On Expectations November 2012
Exchange Rate in eleven months (CH \$ per US\$)

Answers: 57



Monthly Survey On Expectations November 2012
Exchange Rate in twenty three months forward (CH \$ per US\$)

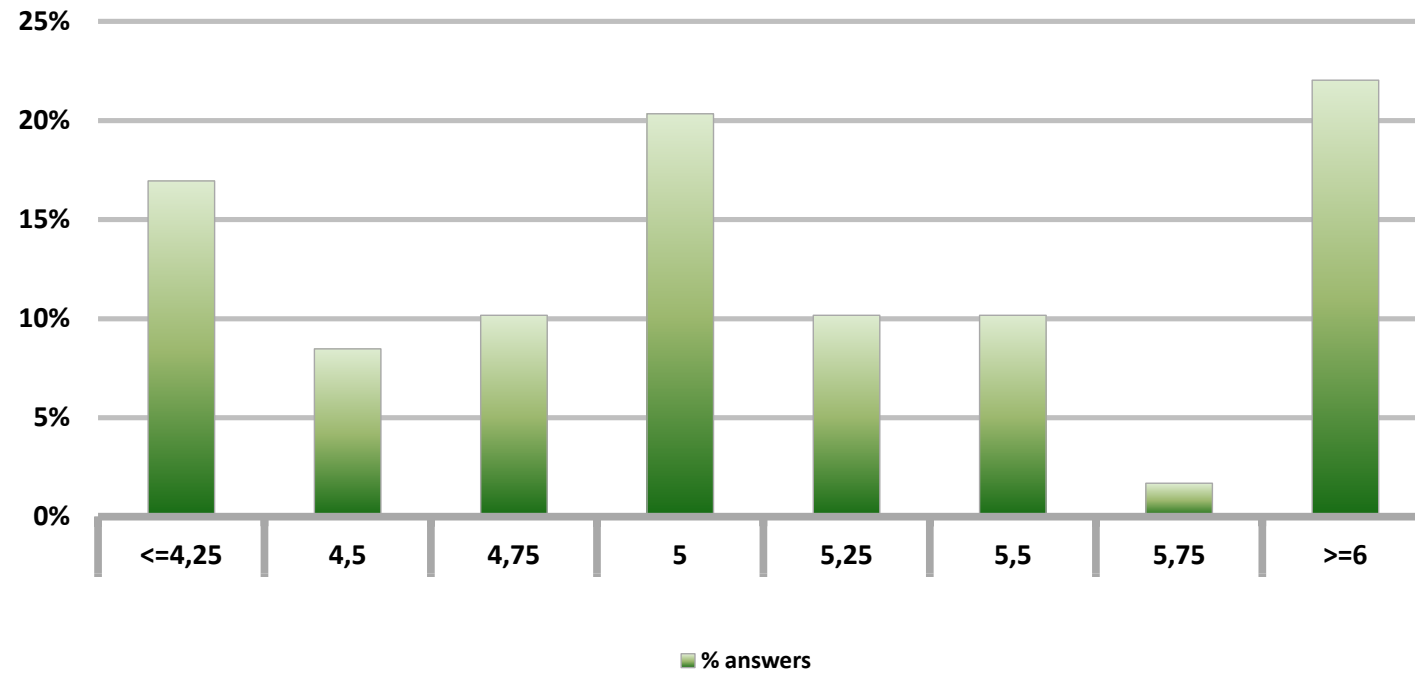
Answers: 54



Monthly Survey On Expectations November 2012

IMACEC (Monthly Activity Index) one month ago

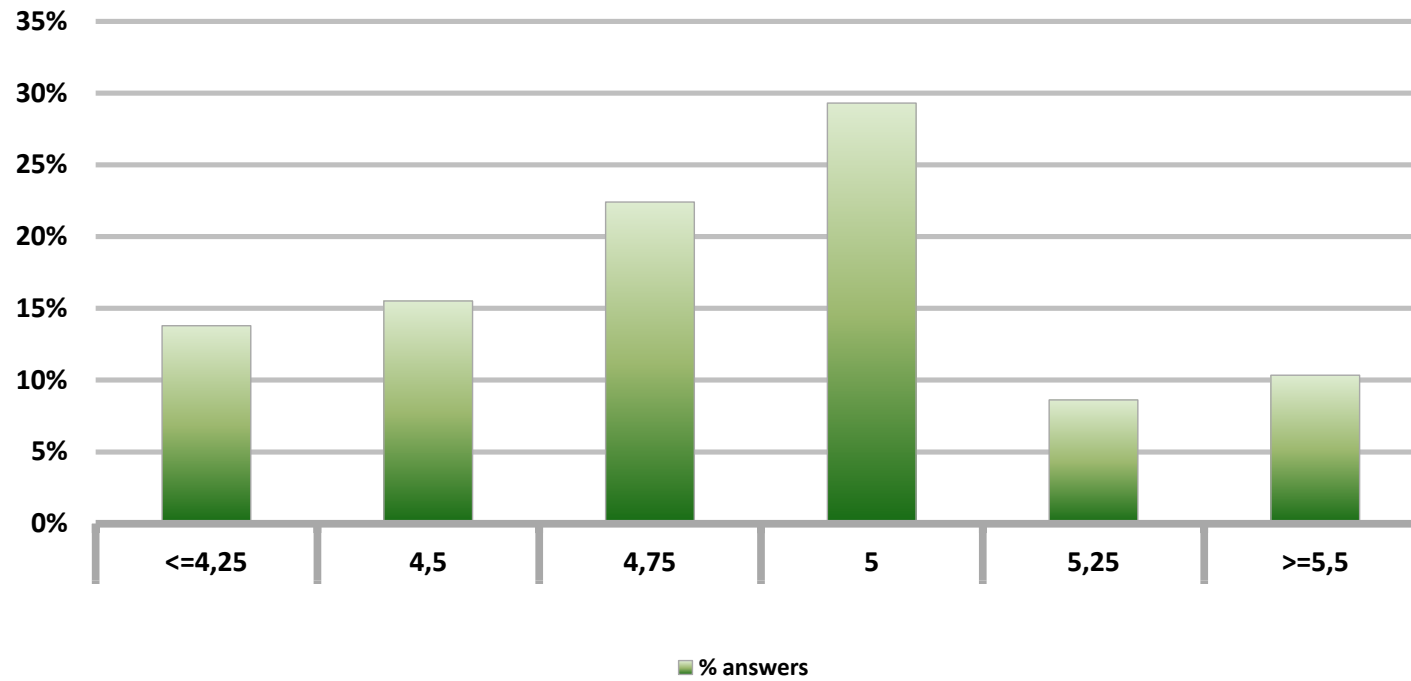
Answers: 59



Monthly Survey On Expectations November 2012

GDP within calendar quarter of the survey

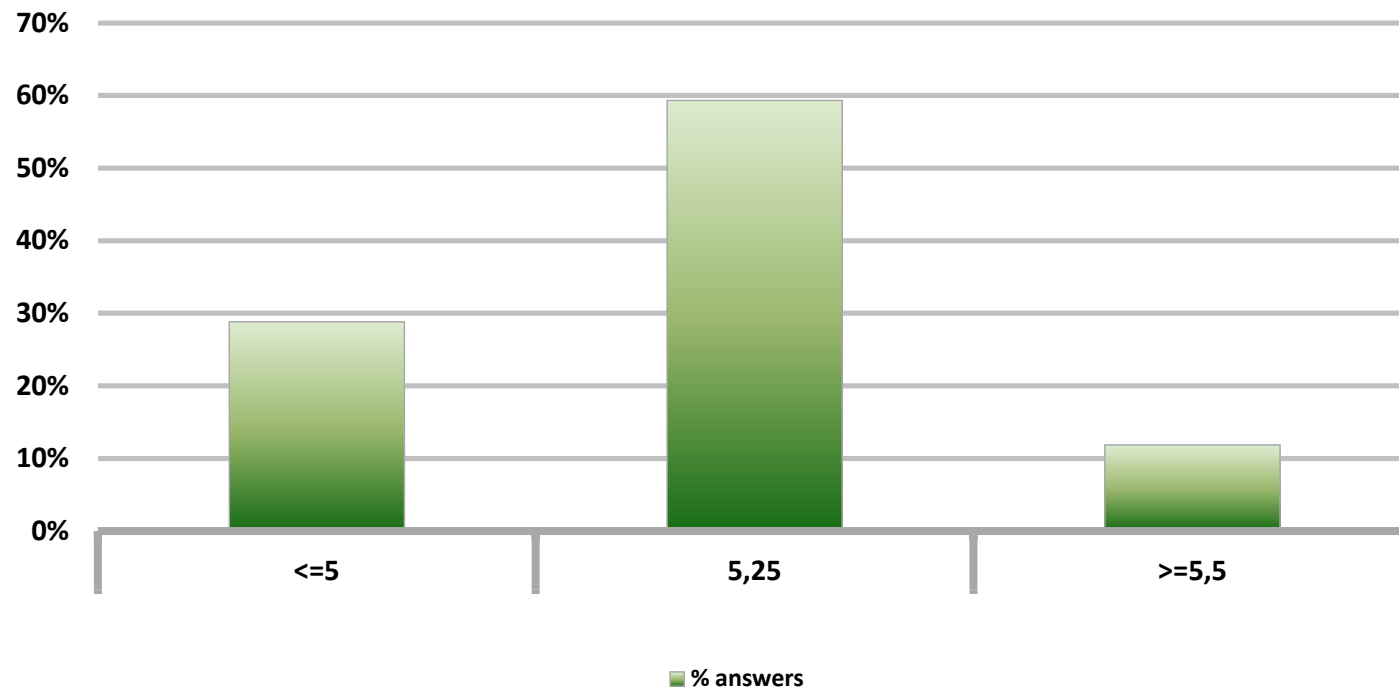
Answers: 58



Monthly Survey On Expectations November 2012

GDP year 2012 (12-month change)

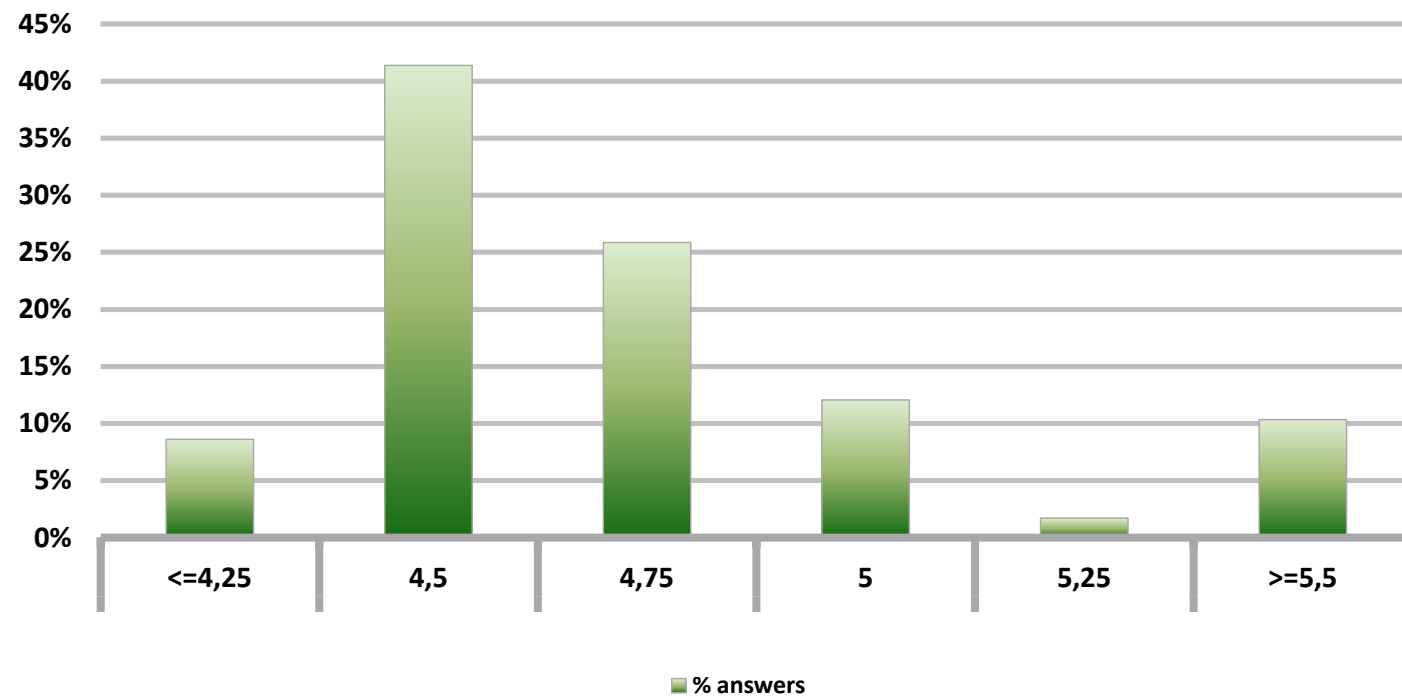
Answers: 59



Monthly Survey On Expectations November 2012

GDP year 2013 (12-month change)

Answers: 58



Monthly Survey On Expectations November 2012

GDP year 2014 (12-month change)

Answers: 56

